



asian institute

Compose

Inbox 163
Snoozed

Meet

New meeting
Join a meeting

Hangouts

T Triyatni +

No recent chats
Start a new one

Regards,
Editorial Team

Reply

Forward



asian institute

Compose

Inbox

163

Snoozed

Meet

New meeting

Join a meeting

Hangouts

T Triyatni



No recent chats

Start a new one



JSP0867 - Status of Manuscript

Inbox x



Asian Institute of Research <ed...>
to me

Mon, Nov 8, 2021, 9:02 AM

Dear Triyatni Martosenjoyo,

Congratulations! The feedback on your submitted manuscript has been a
As the paper fulfills the threshold of reviewers, your manuscript can now b
doing so, please read the following points carefully:

1. Published Paper

Your paper will be published in the **Journal of Social and Political Scien**
payment). If you would like to make any changes to the affiliations of the a
immediately and send back the file to us. Please ensure that you have ser
of all the author's affiliations and email address if you wish your profile to
SSRN database. Your article will be prepared for publication in **Vol.4 No.4**



asian institute

Compose

Inbox 163
Snoozed

Meet

New meeting
Join a meeting

Hangouts

T Triyatni +

No recent chats
Start a new one



recently published article to **ResearchGate**, which is the social networking and researchers to share papers, ask and answer questions, and find coll

Thank you again for trusting us with your research. We look forward to co again in the near future.

Regards,
Editorial Team

Congratulations!

Thanks a lot.

Thank you so m

Reply

Forward



Journal of Social and Political Sciences

Martosenjoyo, Triyatni. (2021), Color in Architecture: Before and After Industry Revolution. In: *Journal of Social and Political Sciences*, Vol.4, No.4, XXX

ISSN 2615-3718

DOI: 10.31014/aior.1991.04.04.XXX

The online version of this article can be found at:
<https://www.asianinstituteofresearch.org/>

Published by:
The Asian Institute of Research

The *Journal of Social and Political Sciences* is an Open Access publication. It may be read, copied, and distributed free of charge according to the conditions of the Creative Commons Attribution 4.0 International license.

The Asian Institute of Research *Social and Political Sciences* is a peer-reviewed International Journal. The journal covers scholarly articles in the fields of Social and Political Sciences, which include, but are not limited to, Anthropology, Government Studies, Political Sciences, Sociology, International Relations, Public Administration, History, Philosophy, Arts, Education, Linguistics, and Cultural Studies. As the journal is Open Access, it ensures high visibility and the increase of citations for all research articles published. The *Journal of Social and Political Sciences* aims to facilitate scholarly work on recent theoretical and practical aspects of Social and Political Sciences.



ASIAN INSTITUTE OF RESEARCH
Connecting Scholars Worldwide

Color in Architecture: Before and After Industry Revolution

Triyatni Martosenjoyo¹

¹ Department of Architecture, Faculty of Engineering, Hasanuddin University. Email: triyatni@gmail.com

Abstract

Color as a visual element cannot be separated from architectural design. The development of knowledge about color involved artists and scientists. In the past, color was always associated with the activities of artists as creators of decorative works using pigments produced by nature. Artists and scientists assume that color occurs due to the influence of light and dark which is homogeneous. This was later refuted by Newton's findings that color is produced by heterogeneous light. Different colors are a result of different refractive indexes. The discovery of artificial colors by Perkin encouraged the industry to create colors not only to produce colors that exist in nature, but also according to the wishes of the user as an individual. The opportunity to use colors according to the needs of individual users then encourages businesses to control colors so that the industry does not suffer losses if the colors of the products they produce do not sell well in the market. They work closely with color forecasters and color designers to determine color trends according to the interests of producers through color cards. This condition is followed by architects who create color schemes based on their own favorite color palette. This article finds out how the development of science positions color in architectural works? The research was conducted with a historical approach and data interpretation methods through a literature review.

Keywords: Color, Color Forecast, Color Card, Color Scheme, Architecture

1. Introduction

Color is a visual experience that greatly influences human life. Colors have now entered all activities of human life following the development of science and technology. In the past, color was closely related to the activities of artists. To create decorative art in their cave dwellings, in cemeteries, or on their bodies, they use colors produced by nature or synthetically, for example from ochres or iron earths for red, orange, yellow, brown, and gold. The black color comes from charcoal, and the white color comes from animal bones. In the findings of paintings in caves, it appears that the artist used natural and synthetic colors to produce various palettes of hues and shades. But the colors of interest are blue, red and yellow (Orna 2013:2-9; Lambourne 1999:1).

Prior to the 1800s, research on color was very limited and tended to be speculative, physical, psychological, cultural, psychological, artistic, and perhaps even spiritual. Research on color is generally limited to topics related to harmony and color perception, as conducted by Von Castell, Hecht and Oberfeld (2018), Ke-Run, Ya-Qian and Zhi-Qiang (2019), Fontoura and Menu (2021) and color technology as is done by Gasparini (2021). Researchers

may not be interested in discussing the building exterior color as an important aspect for the practical reason that most building exteriors are not explicitly colored. Even though historical findings in the ruins as written by Jacques Ignace Hittorff show that the Greek architecture of Empedocles in Selinus Sicily is believed to be white, it turns out that this is not so, but brightly colored polychromatic (Ellingham, 2019; Armstrong 2016:501). This article discusses how the placement of architectural colors is not only as a building decoration, but as an element inherent in the unity of design, from the past to the present.

In the past, artists and scientists tended to think that color was the result of light and dark alone. The size of the scale of darkness makes one color different from another. Red is pure white light that gets the least amount of dark effect. The darkest scale produces black, while the smaller one produces blue. The theory of light and darkness has also been written by Greek philosophers since the Middle Ages, such as Plato (1892:559) in *Timaeus* (390 BC), or his student Aristotle (384-322 BC) that all colors are produced by mixing black and white (Aristotle 1548) in *De Coloribus* (330 BC).

Newton's discovery tacitly raised the doubts of other colorists, but they had no good reason to reject it. Goethe, for example, doubted Newton's theory and chose to follow Aristotle's idea that color represents a mixture of light and dark. White is a representation of light and black is equivalent to darkness (Von Goethe 1970:6-7; Duck & Petry 2016: viii). Although Goethe was considered incapable of understanding Newton's experiments, Goethe's color theory was very well received in several artistic circles (Barsan & Merticariu 2016; Treisman 1996). Artists, for example, assume that the colors of Newton's spectrum are not found in nature. They also state that color is not just a matter of science, but also a psychological problem. They carried out various experiments by mixing pigment colors to produce natural colors.

In 1856 William Perkin discovered the first artificial color of coal tar waste. This bluish purple color is called mauve (France) which soon became a trendsetter (Garfield 2018:8). Furthermore, the industrial revolution in the field of color also made scientists carry out various experiments to produce artificial colors that nature could not provide. Various kinds of color pigments can be mass-produced at an economical cost. This industrial revolution also had a major influence on the development of paint.

Paint that initially functions as a surface coating, for example, protects iron and steel from rusting and corrosion increases as an aesthetic function (Lambourne 1999:2-4), with a variety of color choices according to user preferences. In 1982 the paint company Benjamin Moore introduced a color matching system. The choice of product colors that were originally determined by the manufacturer and distributed to agents en masse, can now be made by anyone (Benjamin Moore 2021). Each user can design the color mix as desired at an individual level.

2. Method

The research uses a historical approach with data interpretation methods. The process begins with collecting literature data related to the topic of architectural color research and the color industrial revolution. The data collected is digital data in the form of documents in the form of text and images. The data comes from historical sources and traces that have been validated and considered valid. Data verification using external and internal criticism methods. The collected data is then grouped by taxonomy. Each data in a group is analyzed with each other. Furthermore, it is synthesized by analyzing data from other groups to obtain conclusions that will be presented in the form of historiography.

3. Results

3.1. Color Morality and Color Cards

Although the industrial revolution in the field of color could produce a variety of desired colors, mass production also resulted in color uniformity including black, white, gray and brown. Brightly colored products like red, orange or yellow are still hard to find. Until the late 19th century there was a view that bright colors aimed at attracting

attention were considered inappropriate and should be used sparingly. Colors like gray or light brown are considered to be more dignified and decent, and are therefore mass-produced.

Metaphorically, for example, white is perceived as something pure (Elliot 2015). This statement contradicts the fact that the subjectivity of symbolic meaning is not universal but contextual. In France red is a symbol of nobility (De Saint-Amand 1900:282). This color is also Louis XIV's clothing to counter Spain's black color (McCabe 2015:123; McCabe 2008:238). Louis XIV also wore red heels (Pastoureau 2017:133 and died in the red and golden bedroom in the heart of the palace of Versailles (Bernier 2018:1).

Pastoureau (2020) states that positioning, colors symbolically and associating them with moral status represents what Bourdieu referred to in 1979 as a game of distinction. A person's status is shown through the difference between moral and immoral classes in society. In the social world, the system of power relations and symbolic systems play a different "taste" as the basis of social judgment. According to Bourdieu, the dominant classes impose this domination not by owning wealth and the means of production, but by imposing the legitimacy of their own tastes and values (Bourdieu 2013; Bourdieu 1977).

Color uniformity is considered an industry's failure to produce bright colors such as red, blue or green. Industries must abandon low-cost mass products and serve customer segmentation according to their respective social circles (Pastoureau 2020:45-49). Attractive colors are seasonal and not timeless like grays and browns that can be adapted to all seasons. Therefore, if the industry mass-produces bright colors, there is a risk that the product has not been absorbed by the market while the color season is over.

The business community realizes that the color industry is a new business that has a risk of loss. Mistakes in determining colors in production have a great potential for failure to sell the products offered. In 1930, Holbrook Jackson, a journalist and writer, spoke about the importance of color determination and color forecasts (Jackson 1930). The UK established a color management authority called the British Color Council. Jackson introduced a practical knowledge instrument in the form of The Shade Card for textile product color users.

Textile manufacturers, garment manufacturers and retailers need information about colors that are likely to be trending in the coming season. This information is important so that they can prepare requests. The Shade Cards are issued by the *Chambre Syndicale des Teinturiers* in Lyon France, *Saint-Étienne* France, the *Société de Teinture & d'Apprêt* Basel, Switzerland. (Błaszczuk 2018:35-37). As a result of World War I, America, which had difficulty getting supplies of dyeing and textiles from Europe, finally formed color forecasting by The Color Association of the United States and the Color Council and Trend Union (Bleicher 2012:34-36).

The trend of the preferred color has been planned and constructed by color forecasters and color designers 18-24 months before the color becomes trendy. They evaluate and analyze the consumer's preferred color possibilities for the next two-year sales season, allowing sufficient time to match the industry's production schedule. These experts conduct research into people of various age groups. They throw in various color ideas and ask respondents to choose them. All industries whose products are related to color, such as fiber/yarn, textile, leather, plastic, paint, dye, etc., will use the services of color planners and forecasters, so that their products conform to color trends when their products are marketed.

Research in color psychology has shown that 62-90% of consumer product ratings are based on color alone (Moir 2011). Even though technological developments allow individual users to choose colors according to their wishes, color trends constructed by color forecasters and color designers always pay attention to consumer behavior which is influenced by the situation and world conditions that occur at that time, which like or dislike will affect the way we express ourselves. This trend is getting wider when information systems no longer recognize distance and time. History records that color trends are strongly influenced by events related to: (1) Social, political and economic issues; (2) The world and stage of entertainment; (3) The world of art; and (4) seasonal cyclical patterns (Błaszczuk 2012). When social, political and economic conditions deteriorate, people tend to use dim colors. But these colors can be alternated with bright colors to represent hope and optimism.

When the 2008 Olympics were decided to be held in China, the color trend immediately towards red which is the symbolic color of China. Favorite color of art figures. Revitalizing Miami Beach by Leonard Horowitz draws on the historical colors of art Deco artists such as Picasso and Gerrit Rietveld (Miami Design Preservation League 2021; Curtis 2013). The color season cycle repeats about once every 20 years. But with the development of information technology, the cycle of this season has become shorter.

3.2. Color Theme and Fassade Revitalization

Until 1840, exterior color schemes were difficult to find in America. The color scheme became an important document when a landscape architect Andrew Jackson Downing (1815-1852) made it for the book *Cottage Residences* in 1842. As a polemicist, Downing did not like white wooden buildings, and wanted to change the perception of architecture observers. Downing created a palette of grays, yellows, tans, and pinks.

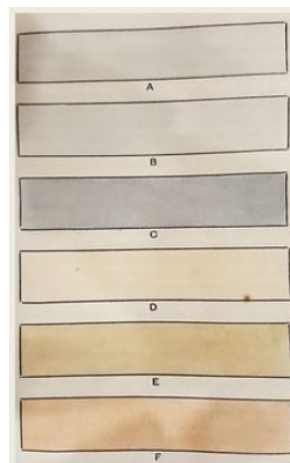


Figure 1: Downing Color Scheme
Source: Downing (1842)

In 1880, Downing's ideas were developed in the form of a multi-color paint scheme and standard ready-mixed paint and color printing by architects. See Figure 1. This color scheme then, became an ideal promotion for the paint industry after the Civil War compared to the unpredictable tones of handmade paint. This standardized color then went hand-in-hand, very useful for buyers in the polychromatic era in the late Victorian era in the early 19th century (Bock 1996:52; Sherwin Williams n.d.; Downing 1842:25).

In 1918, Le Corbusier stated that form preceded the idea of color and that color was only an accessory of form. He considered that form is colorless and color is not independent because it follows form and not vice versa. In 1925, Le Corbusier published *L'art decoratif d'aujourd'hui* (The Decorative Art of Today) which rejected the style of the 1925 Exposition of Decorative Arts which was based on Chinese, Japanese, Indian, and Persian art which was rich in ornamentation, and color. For him, modern decorative art lacks decoration and art Deco is a form of revival of Louis Philippe and Louis XVI moderne (Journal 2015; Corbusier 1987).

Contrary to earlier views, in 1926 Corbusier designed a workers' housing complex, Cité Frugès, in Pessac. Unlike the previous villas which had white exterior walls, but for Cité Frugès, he added brown, yellow and jade green panels. In 1929-1933 Corbusier designed 46 Swiss Pavilion student dormitories at the Cité Universitaire Paris. He designed the main salon decorated with black-and-white nature photo montages. In 1931 Le Corbusier stated that humans need color to live. Color is an element as important as water and fire (Calvano 2006:354).

In 1931 Corbusier created 13 color schemes using 43 color palettes. In 1948, Corbusier replaced the decorations of the Swiss Pavilion with colorful murals that he painted himself. In 1959, he created a polychromatic color scheme using a 63 color palette (Les Couleurs 2021). The Corbusier 1931-1959 color scheme was originally created by the wallpaper company Salubra. In 1997 this color scheme was produced by the Swiss paint company KT Color Co.

The works exhibited at the 1925 Exposition of Decorative Arts are generally inspired by the anthropologist's discovery of Ancient Mexico (Nuttall 1886) and the 1922 discovery of the intact tomb of King of Pharaoh Tutankhamun by British archaeologist Howard Carter (Newberry 1939), European cubist artworks such as Picasso (Klein 2021), pre-Columbian and Caribbean culture (Pool 2018), as well as the emergence of new materials such as chrome plating, stainless steel, and plastic. This exhibition influences the rich style of American architectural luxury with bright and strong colors known as the art Deco style.

In architectural art, the art Deco style is demonstrated by the Chrysler Building (1928-1930) designed by William Van Alen. The interior of the luxurious lobby with yellow and orange nuances is designed to follow the rhythm of the greatness of the Egyptian pyramids. Elevator door with lotus motif ornament from brass and wood shows high quality taste (Knowles 2014:115-116). The art Deco style which was influenced by the Dutch artists, is known as the neoplasticism flow. The distinguishing feature of De Stijl's artist is the use of horizontal and vertical lines with primary colors and achromatic colors of white, black, and gray. They put color only on continuous planes without cuts. consistently uses this style in the architectural design of the Schröder House designed by Gerrit Rietveld (Friedman 2007:65).



Figure 2: Cherokee red at Taliesin West, Scottsdale/Phoenix Arizona

Source: Wikipedia (2021)

In 1936, Frank Lloyd Wright made an organic color scheme for Fallingwater. In collaboration with Martin-Senour Paints, Wright created his favorite color palette called Cherokee Red. This red color evolved from a deep, earthy-brown red, to a dusty orange-tinged, clay red. Wright saw Cherokee red as the base color of the earth in homage to the Native Americans who made pots out of red earth. In Fallingwater, for example, 'Cherokee red' is only for building materials made of iron (Frank Lloyd Wright Foundation 2017; Old House Magazine 2002:32). This color scheme with Cherokee red appeared in other Wright designs such as Taliesin West. See Figure 2.

In the 1970s, colored paint was used to revitalize old cities in Europe. This activity is a collaboration between architects, artists and local residents. The color scheme of the city of Turin (Italy) was designed by architect Giovanni Brino based on the original colors of the city's history and traditions. This model was considered very successful in attracting tourists and was soon followed by other old cities such as Tirana (Italy) by artist Edi Rama, and Rio de Janeiro by Jeroen Koolhaas and Dre Urhahn (Prisco 2013), Querétaro City (Mexico) by artist Boa Mistura, or Girona (Italy) by architect Josep Fuste Comalada (Espelt and Benito 2004), and Gamcheon (South Korea) by Jin Young-Sup (Elisa 2019) (Lee 2014). This color approach in urban space is offered to reconcile the desire for conservation and the continuity of the vitality of old city spaces (Boeri 2017).

In 2006, Koolhaas and Urhahn started research to paint the facades of slum areas in Rio de Janeiro in the series Favela Painting. They chose to paint three houses right in the middle of Vila Cruzeiro. The project, which was donated by the Firmeza Foundation (Netherlands) and in collaboration with the paint company Coral-Akzo Nobel,

aims for artists to collaborate with local youth to create community artworks. The Boy With Kite themed mural is a symbol for the children of the *favela*. This initial mural was continued by residents who painted cement hillsides with the title Fish Leaping in a River (Darlington 2010). In its development the Favela Painting project did not last long because the paint faded. This makes maintenance difficult. Furthermore, the community replaced the paint with locally available sustainable materials, namely lime stucco and pigment tiles in the form of a mosaic (Pavela Painting 2018).



Figure 3: Mural painting with the theme Boy With Kite on the facade in the middle of the slum area of Vila Cruzeiro

Source: Koolhaas (2007)

The revitalization model with this approach is also carried out in Indonesia, such as in Jodipan village, Malang. This program is supported in collaboration with corporate social responsibility (CSR) paint industry companies with participatory-based planning and carried out consistently for the purpose of improving the local community's economy (Wulandari 2017). While the revitalization of other old cities is generally carried out based on local community culture by architects and artists, Jodipan is fully planned with the concept of creating a place branding based on social marketing communication media practitioners. Through the concept of place branding using social media, Jodipan was introduced as a worthy tourist destination to visit (Sulistyaningsih, et al. 2021).

These descriptions show that the choice of color in the past was determined by the architect and the user took advantage of the palettes and color schemes that were not only a favorite of famous architects but also by the current trend situation. The choice of architectural color is part of the style of consumer behavior towards fashion. Industry manufactures and markets products based on architects' color designs. On the other hand, there is a phenomenon of architects making color schemes by involving the participation of the local community. This shows that the determination of color in architecture is also influenced by the development paradigm that developed in the 1970s, where the community participated and was involved in participatory development. The goal is for local communities to be involved in the design and implementation of development projects. With active participation, it is hoped that the projects initiated will be sustainable and bring benefits to local communities (Cornwall 2002; Cornwall and Coelho 2007).

4. Discussion

The history of the development of the science of color, which was originally the area of expertise of artists and physicists, has attracted the attention of many disciplines. The industrial revolution opened up opportunities for color users not to rely on natural pigments because the industry could create synthetic colors according to the user's wishes. Therefore, the choice of color palettes and schemes no longer depends on the color products provided by the industry but can be done by individual users through the application of a color mixing system.

The freedom of choice color is recognized by the business community regarding color as something dangerous because foam causes the failure of the production offered. This encourages business people to control the freedom of color choice to be limited which is marketed as a color trend for certain seasons. This policy involves not only artists and architects as trendsetters, but also media practitioners such as journalists and writers. However, the

architects also realized that the trend of the paradigm of active community participation could not be avoided. Every community has the right to choose what is considered good for their sustainable future, including improving the quality of their environment through the use of color.

References

- Aguilonius, F. 1613. *Opticorum Libri Sex-Philosophis iuxta ac Mathematicis utiles*. Antwerp: Plantin.
- Aristotle. 1548. *De Coloribus Libellus*. Florentiae : Ex officina Laurentii Torrentini.
- Armstrong, Christopher Drew. 2016. "French Architectural Thought and the Idea of Greece." In *A Companion to Greek Architecture*, edited by Margaret M. Miles , 487-508. Chichester: John Wiley & Sons Inc.
- Barsan, Victor, and Andrei Merticariu. 2016. "Goethe's Theory of Colors Between the Ancient Philosophy, Middle Ages Occultism and Modern Science." *Cogent Arts & Humanities* (Routledge) 3 (1): 1-29.
- Benjamin Moore. 2021. *Our History*. Accessed August 31, 2021.
- Bernier , Olivier. 2018. *Louis XV*. Boston: New Word City.
- Blaszczyk, Regina Lee. 2012. *The Color Revolution*. CambridgeThe MIT Press.
- Blaszczyk, Regina Lee. 2018. "The Rise of Color Forecasting in the United States and Great Britain." In *The Fashion Forecasters - A Hidden History of Color and Trend Prediction*, edited by Regina Lee Blaszczyk and Ben Wubs. London: Bloomsbury Publishing.
- Bleicher, Steven. 2012. *Contemporary Color Theory & Use*. New York: Delmar.
- Bock, Gordon. 1996. *Colorful Issues in Choosing Exterior Paint*. Vol. 24, in *Old-House Journal, Magazine*, 50-55. Denver: Active Interest Media Home Buyer Publications.
- Boeri, Christina. 2017. "Color Loci Placemaking: The Urban Color Between Needs of Continuity and Renewal." *Color Research & Application* (Wiley & Sons) 42: 641-649.
- Bourdieu, Pierre. 2013. *Distinction: A Social Critique of the Judgement of Taste*. Abingdon: Routledge.
- Bourdieu,, Pierre. 1977. *Outline of a Theory of Practice*. Translated by Richard Nice. Cambridge: Cambridge University Press.
- Calvano, Jose Luis. 2006. "The Research on Color in Architecture: Brief History, Current Developments, and Possible Future." *Color Research & Application* 31 (4): 350-363.
- Corbusier, Le. 1987. *The Decorative Art of Today*. Massachusetts: MIT Press.
- Cornwall, Andrea, and Vera Schattan P. Coelho. 2007. "Spaces for Change? The Politics of Participation in New Democratic Arenas." In *Spaces for Change? The Politics of Participation in New Democratic Arenas*, edited by Andrea Cornwall and Vera Schattan P. Coelho, 1-32. London: Zed Book.
- Cornwall, Andrea. 2002. *Beneficiary, Consumer, Citizen: Perspectives on Participation for Poverty Reduction - Sida Studies No. 2*. Sida Studies.
- Curtis, James R. 2013. "Art Deco Architecture in Miami Beach." *Journal of Cultural Geography* (Routledge) 20 (46): 53-63.
- Darlington, Shasta. 2010. *Rio Slum Transformed into Canvas Bursting With Color*. November 17. Accessed August 31, 2021. <http://edition.cnn.com/2010/WORLD/americas/11/17/brazil.beautiful.favela/index.html>
- De Saint-Amand, mber. 1900. *Women of Versailles: The Court of Louis XIV*. Translated by Gilbert Elizabeth Martin. New York: Charles Scribner's Sons.
- Diane, Tracy, and Tom Cassidy. 2009. *Colour Forecasting*. Oxford: Blackwell Publishing Ltd.
- Downing , Andrew Jackson. 1842. *Cottage Residences Or, A Series of Designs for Rural Cottages and Cottage Villas, and Their Gardens and Grounds. Adapted to North America*. New York: Wiley and Outnam.
- Duck, Michael John, and Michael Petry. 2016. *Goethe's "Exposure Of Newton's Theory": A Polemic On Newton's Theory Of Light And Colour*. London: Imperial College Press.
- Elisa. 2019. *Membedah Kampung Instagrammable Gamcheon*. November 26. Accessed August 31, 2021. <https://rujak.org/membedah-kampung-instagrammable/>.
- Ellingham,, Ian. 2019. "Why Not Colour In Architecture?" *The Right Angle Journal*, (Naylor) 2 (4).
- Elliot, Andrew J. 2015. *Frontiers in Psychology* 6: 1-8.
- Espelt, Nuria Gali, and Antonio Donaire Benito. 2004. "The Social Construction of The Image of Girona: A Methodological Approach." *Tourism Management* (Elsevier) 26 (5).
- Frank Lloyd Wright Foundation. 2017. *The Whirling Arrow*. Accessed September 30, 2021. <https://franklloydwright.org/about-us/>.
- Friedman, Alice T. 2007. *Women and the Making of the Modern House: A Social and Architectural History*. New Haven: Yale University Press.
- Garfield , Simon. 2018. *Mauve: How One Man Invented a Colour that Changed the World*. Edin burgh: Canongate Books Ltd.
- Gasparini, Katia. 2021. "The Colour of Emerging Textile for Urban Regeneration: The Role of Technology Between Experimentations and Craftsmanship." *Color Research & Application* (John Wiley & Sons) 538-545.

- Jackson, Holbrook. 1930. "Colour Determination in The Fashion Trades." *Journal of the Royal Society of Arts* (RSA The Royal Society for Arts, Manufactures and Commerce) 78 (4034): 492-513.
- Journel, Guillemette Morel. 2015. *Le Corbusier Construire la vie Moderne*. Paris: Editions du Patrimoine.
- Ke-Run, Li, Yang Ya-Qian, and Zheng Zhi-Qiang. 2019. "Research on Color Harmony of Building Façades." *Color Research & Application* (John Wiley and Sons) 45 (1): 105-119.
- Klein, Dan. 2021. *What is Art Deco? From the Archives*. Accessed August 31, 2021. <https://www.artdeco.org/archives>.
- Knowles, Eric. 2014. *Art Deco*. U.K.: Shire Publications.
- Koolhaas, Jeroen. 2007. *Boy With Kite*. August 31. Accessed 2021. <https://jeroenkoolhaas.com/2007-BOY-WITH-KITE>.
- Lambourne, R. 1999. "Paint Composition and Applications — A General Introduction." In *Paint and Surface Coatings - Theory and Practice*, edited by R. Lambourne and T. A. Striven, 1-18. Cambridge: Woodhead Publishing Ltd.
- Lee, Yeun Sook. 2014. "A Local Asset Based Regeneration Process of Gamcheon Culture Village Busan." *Korea Institute of Ecological Architecture and Environment Journal* 14 (3): 111-120.
- Les Couleurs. 2021. *Les Couleurs*. Accessed August 31, 2021. <https://www.lescouleurs.ch/en/the-colours/colour-keyboards/colour-keyboard-1931>.
- McCabe, Ina Baghdiantz. 2008. *Orientalism in Early Modern France: Eurasian Trade, Exoticism, and the Absent Regime*. Oxford: Berg.
- McCabe, Ina Badiantz. 2015. *A History of Global Consumption: 1500 - 1800*. London: Routledge.
- Miami Design Preservation League. 2021. *From the Archive – The Color of Leonard Horowitz's Life*. Accessed August 31, 2021. <https://mdpl.org/archives/2021/07/the-colors-of-leonard-horowitzs-life/>.
- Moir, Diane E. 2011. "Trademark Protection of Color Alone: How and When Does a Color Develop Secondary Meaning and Why Color Marks Can Never Be Inherently Distinctive." *Touro Law Review* (Touro Law Center) 27 (2).
- Newberry, P. E. 1939. "Howard Carter." *The Journal of Egyptian Archaeology* (Egypt Exploration Society) 25 (1): 67-69.
- Newton, Isaac. 1730. *Opticks: Or a Treatise of the Reflections, Refractions, Inflections & Colours of Light*. London: William Innys.
- Nuttall, Zelia. 1886. "The Terracotta Heads of Teotihuacan." *The American Journal of Archaeology and of the History of the Fine Arts*. (The American Journal of Archaeology and of the History of the Fine Arts) 2: 157-178.
- Old House Magazine. 2002. *Old House Magazine*. Vol. 30 (5). Active Interest Media, Inc.
- Orna, Mary Virginia. 2013. "Introduction: Colors, Natural and Synthetic, in the Ancient World." In *Springer Briefs in Molecular Science: History of Chemistry*, edited by Virginia Mary Orna, 1-10. New York: Springer.
- Pastoureaux, Michel. 2020. *The Colours of Our Memories*. Translated by Janet Lloyd. London: Polity Press.
- Pastoureaux, Michel. 2017. *Red The History of a Color*. Princeton: Princeton University Press.
- Pavela Painting. 2018. *Pavela Painting*. Accessed August 31, 2021. <https://favelapainting.com/PROJECTS>.
- Plato. 1892. *Republic. Timaeus. Critias - The Dialogues of Plato*. Translated by B. Jowett. Vol. II. New York: Charles Scribner's Sons.
- Pool, Rachel Frances. 2018. "The Misconceived Image in Society of American Art Deco Architecture and Design." *The International Journal of the Image* (Common Ground Research Networks) 9 (2): 37-53.
- Prisco, Joanna. 2013. *Expansive Mural Makeover*. November 2. Accessed August 31, 2021. <https://abcnews.go.com/Lifestyle/artists-aim-rebrand-rio-slums-expansive-mural-makeover/story?id=20740743>.
- Sherwin Williams. n.d. *Heritage Colors, Authentic Exterior Colors for American Buildings 1820/1920*. Cleveland: The Sherwin Williams Company.
- Sulistyaningsih, Tri, Jainuri Jainuri, Salahudin Salahudin, Hazel Dapat Jovita, and Achmad Nurmandi. 2021. "Can Combined Marketing and Planning-oriented of Community-based Social Marketing (CBSM) Project Successfully Transform the Slum Area to Tourism Village? A Case Study of the Jodipan Colorful Urban Village, Malang, Indonesia." *Journal of Nonprofit & Public Sector Marketing* (Routledge, Taylor & Francis Group).
- Treisman, Michel. 1996. "Why Goethe Rejected Newton's Theory of Light." *Perception* (Sage Publications) 25: 1219-1222.
- Von Castell, Christoph, Heiko Hecht, and Daniel Oberfeld. 2018. "Bright Paint Makes Interior-Space Surfaces Appear Farther Away." *plos One* (Public Library of Science) 13 (9): 1-15.
- Von Goethe, Johann Wolfgang. 1970. Cambridge: MIT Press.
- Wikipedia. 2021. *Taliesin West*. June 26. Accessed August 31, 2021. https://en.wikipedia.org/wiki/Taliesin_West.
- Wulandari, Prisca Kiki. 2017. "Inovasi Pemuda Dalam Mendukung Ketahanan Ekonomi Keluarga (Studi Di Kampung Warna-Warni Kelurahan Jodipan, Kecamatan Blimbing, Kota Malang)." *Jurnal Ketahanan Nasional* 23 (3): 300-319.



Author: [undisclosed]
Affiliation: [undisclosed]
Title: Color in Architecture: Before and After Industry Revolution

MANUSCRIPT REVIEW FORM

Journal of Social and Political Sciences
Reviewer: [undisclosed]

SECTION I: General Assessment (Please rate the manuscript based on your critical assessment, with a tick 'X' in the appropriate box below)

View of the Reviewers	1	2	3	4	Does Not Apply
The Manuscript provides a contribution to the research area regarding a new finding, interpretation and/or point of view			X		
The title of the manuscript is appropriate, and the title reflects the content of the manuscript		X			
There is a balanced relationship between the objective, content, and the conclusion of the manuscript			X		
The research methods and the data collection techniques are relevant to the objective and adequately explained		X			
The manuscript is precise and well-written		X			
The figures, tables and graphs are relevant.			X		
The references are adequate, convenient and up-to-date.			X		
The manuscript complies with academic ethical rules		X			
The aim/argument/hypothesis is clear and well-discussed.		X			
The results of the analysis are correctly interpreted			X		
The manuscript is free of issues of grammar, punctuation and such.		X			

(1 = Poor) (2 =Fair) (3 = Good) (4 =Excellent)

SECTION II: Evaluation Criteria (Please give your critical comments for the deficiencies of the manuscript)

Evaluation Criteria	Comments
<p>1. Thematic Focus and Empirical Grounding</p> <p>When considering the Thematic Focus and Empirical Grounding, please use the following prompts to guide your overall response and evaluation:</p> <ul style="list-style-type: none"> • Is this a topic that needs addressing? • Is the area investigated by the article: significant? Timely? Important? In need of addressing because it has been neglected? Intrinsically interesting? Filling a gap of current knowledge? • Are data collection processes, textual analyses of exegeses of practice sufficient and adequate to answer the research questions? • Does the article adequately document, acknowledge, and reference the existing findings, research, practices, and literature in its field? • Does the article relate in a coherent and cogent way with issues of real-world significance? 	<p>In general, a major contribution to the academic discourse is to the historical analysis of colors, based on the specified timeframe of the article.</p> <p>Based on the criteria of thematic focus and empirical grounding, several critical points are identified:</p> <ol style="list-style-type: none"> 1. Data collection process is well defined 2. Urgency of the topic and how it contributes to academic and practical discourses are well elaborated 3. Gap of knowledge filled is clear <p>In addition to minor considerations below (theoretical grounding, logic, communication), I recommend this article for publication.</p>

<p>2. Conceptual Model</p> <p>When considering the Conceptual Model, please use the following prompts to guide your overall response and evaluation.</p> <ul style="list-style-type: none"> • Are the main concepts or categories appropriate to the investigation? • Should other concepts or categories have been considered? • Are key concepts adequately defined? Are they used consistently? • Does the article make necessary or appropriate connections with existing theory? • Does the article develop, apply, and test a coherent and cogent theoretical position or conceptual model? 	-
<p>3. Explanatory Logic</p> <p>When considering the Explanatory Logic, please use the following prompts to guide your overall response and evaluation.</p> <ul style="list-style-type: none"> • How effectively does the article reason from its empirical reference points? • Are the conclusions drawn from the data, texts, sources, or represented objects clear and insightful? Do they effectively advance the themes that the article sets out to address? • Does the article demonstrate a critical awareness of alternative or competing perspectives, approaches, and paradigms? • Is the author conscious of his or her own premises and perhaps the limitations of his or her perspectives and knowledge-making processes? 	-
<p>4. Implications and Applications</p> <p>When considering the Implications and Applications, please use the following prompts to guide your overall response and evaluation.</p> <ul style="list-style-type: none"> • Does the article demonstrate the direct or indirect applicability, relevance, or effectiveness of the practice or object it analyzes? • Are its implications practicable? • Are its recommendations realistic? • Does the article make an original contribution to knowledge? • To what extent does it break new intellectual ground? • Does it suggest innovative applications? • What are its prospects for broader applicability or appreciation? • How might its vision for the world be realized more widely? 	-
<p>5. Quality of Communication</p> <p>When considering the Implications and Applications, please use the following prompts to guide your overall response and evaluation.</p> <ul style="list-style-type: none"> • Is the focus of the article clearly stated (for instance, the problem, issue, or object under investigation; the research question; or the theoretical problem)? • Does the article clearly express its case, measured against the standards of the technical language of its field and the reading capacities of audiences academic, tertiary student, and professional? • What is the standard of the writing, including spelling and grammar? • If necessary, please make specific suggestions or annotate errors in the text. 	-

SECTION III: Recommendation (*Kindly mark with an 'X'*)

Accept the manuscript as submitted	
Accept the manuscript with minor editorial proofreading	X
Accept the manuscript with minor substantive revisions	
Accept the manuscript with major substantive revisions	
Reject the manuscript because it does not fulfill the journal criteria	



Search mail

Compose

Inbox 76
Snoozed
Important

Meet

New meeting
Join a meeting

Hangouts

T Triyatni +

No recent chats
Start a new one

JSP0867 - Final Publication Draft AIOR



Asian Institute of Research

Dear Triyatni, Please find the attached file for the final draft of you



Triyatni M <triyatni@gmail.com>

Nov 15

to Asian

Dear Editors,

Thank you for the correction of the article that has been given. I sent

Regards,

Dr. Ir. Triyatni Martosenjoyo, MSi

Head of Architecture Design Laboratory

Faculty of Engineering, Hasanuddin University

Jalan Poros Malino Km. 6 Bontomarannu

Gowa, Sulawesi Selatan

INDONESIA



Journal of Social and Political Sciences

Martosenojoyo, Triyatni. (2021), Color in Architecture: Before and After Industry Revolution. In: *Journal of Social and Political Sciences*, Vol.4, No.4, XXX

ISSN 2615-3718

DOI: 10.31014/aior.1991.04.04.XXX

The online version of this article can be found at:
<https://www.asianinstituteofresearch.org/>

Published by:
The Asian Institute of Research

The *Journal of Social and Political Sciences* is an Open Access publication. It may be read, copied, and distributed free of charge according to the conditions of the Creative Commons Attribution 4.0 International license.

The Asian Institute of Research *Social and Political Sciences* is a peer-reviewed International Journal. The journal covers scholarly articles in the fields of Social and Political Sciences, which include, but are not limited to, Anthropology, Government Studies, Political Sciences, Sociology, International Relations, Public Administration, History, Philosophy, Arts, Education, Linguistics, and Cultural Studies. As the journal is Open Access, it ensures high visibility and the increase of citations for all research articles published. The *Journal of Social and Political Sciences* aims to facilitate scholarly work on recent theoretical and practical aspects of Social and Political Sciences.



ASIAN INSTITUTE OF RESEARCH
Connecting Scholars Worldwide

Color in Architecture: Before and After Industry Revolution

Triyatni Martosenjoyo¹

¹ Department of Architecture, Faculty of Engineering, Hasanuddin University. Email: triyatni@gmail.com

Abstract

Color as a visual element cannot be separated from architectural design. The development of knowledge about color involved artists and scientists. In the past, color was always associated with the activities of artists as creators of decorative works using pigments produced by nature. Artists and scientists assume that color occurs due to the influence of light and dark which is homogeneous. This was later refuted by Newton's findings that color is produced by heterogeneous light. Different colors are a result of different refractive indexes. The discovery of artificial colors by Perkin encouraged the industry to create colors not only to produce colors that exist in nature, but also according to the wishes of the user as an individual. The opportunity to use colors according to the needs of individual users then encourages businesses to control colors so that the industry does not suffer losses if the colors of the products they produce do not sell well in the market. They work closely with color forecasters and color designers to determine color trends according to the interests of producers through color cards. This condition is followed by architects who create color schemes based on their own favorite color palette. This article finds out how the development of science positions color in architectural works? The research was conducted with a historical approach and data interpretation methods through a literature review.

Keywords: Color, Color Forecast, Color Card, Color Scheme, Architecture

1. Introduction

Color is a visual experience that greatly influences human life. Colors have now entered all activities of human life following the development of science and technology. In the past, color was closely related to the activities of artists. To create decorative art in their cave dwellings, in cemeteries, or on their bodies, they use colors produced by nature or synthetically, for example from ochres or iron earths for red, orange, yellow, brown, and gold. The black color comes from charcoal, and the white color comes from animal bones. In the findings of paintings in caves, it appears that the artist used natural and synthetic colors to produce various palettes of hues and shades. But the colors of interest are blue, red and yellow (Orna 2013:2-9; Lambourne 1999:1).

Prior to the 1800s, research on color was very limited and tended to be speculative, physical, psychological, cultural, psychological, artistic, and perhaps even spiritual. Research on color is generally limited to topics related to harmony and color perception, as conducted by Von Castell, Hecht and Oberfeld (2018), Ke-Run, Ya-Qian and Zhi-Qiang (2019), Fontoura and Menu (2021), and color technology as is done by Gasparini (2021). Researchers

Comment [MOU1]: example

may not be interested in discussing the building exterior color as an important aspect for the practical reason that most building exteriors are not explicitly colored. Even though historical findings in the ruins as written by Jacques Ignace Hittorff show that the Greek architecture of Empedocles in Selinus Sicily is believed to be white, it turns out that this is not so, but brightly colored polychromatic (Ellingham, 2019; Armstrong 2016:501). This article discusses how the placement of architectural colors is not only as a building decoration, but as an element inherent in the unity of design, from the past to the present.

Deleted: ,

In the past, artists and scientists tended to think that color was the result of light and dark alone. The size of the scale of darkness makes one color different from another. Red is pure white light that gets the least amount of dark effect. The darkest scale produces black, while the smaller one produces blue. The theory of light and darkness has also been written by Greek philosophers since the Middle Ages, such as Plato (1892:559) in *Timaeus* (390 BC), or his student Aristotle (384-322 BC) that all colors are produced by mixing black and white (Aristotle 1548) in *De Coloribus* (330 BC).

Newton's discovery tacitly raised the doubts of other colorists, but they had no good reason to reject it. Goethe, for example, doubted Newton's theory and chose to follow Aristotle's idea that color represents a mixture of light and dark. White is a representation of light and black is equivalent to darkness (Von Goethe 1970:6-7; Duck & Petry 2016: viii). Although Goethe was considered incapable of understanding Newton's experiments, Goethe's color theory was very well received in several artistic circles (Barsan & Merticariu 2016; Treisman 1996). Artists, for example, assume that the colors of Newton's spectrum are not found in nature. They also state that color is not just a matter of science, but also a psychological problem. They carried out various experiments by mixing pigment colors to produce natural colors.

In 1856 William Perkin discovered the first artificial color of coal tar waste. This bluish purple color is called mauve (France) which soon became a trendsetter (Garfield 2018:8). Furthermore, the industrial revolution in the field of color also made scientists carry out various experiments to produce artificial colors that nature could not provide. Various kinds of color pigments can be mass-produced at an economical cost. This industrial revolution also had a major influence on the development of paint.

Paint that initially functions as a surface coating, for example, protects iron and steel from rusting and corrosion increases as an aesthetic function (Lambourne 1999:2-4), with a variety of color choices according to user preferences. In 1982 the paint company Benjamin Moore introduced a color matching system. The choice of product colors that were originally determined by the manufacturer and distributed to agents en masse, can now be made by anyone (Benjamin Moore 2021). Each user can design the color mix as desired at an individual level.

2. Method

The research uses a historical approach with data interpretation methods. The process begins with collecting literature data related to the topic of architectural color research and the color industrial revolution. The data collected is digital data in the form of documents in the form of text and images. The data comes from historical sources and traces that have been validated and considered valid. Data verification using external and internal criticism methods. The collected data is then grouped by taxonomy. Each data in a group is analyzed with each other. Furthermore, it is synthesized by analyzing data from other groups to obtain conclusions that will be presented in the form of historiography.

3. Results

3.1. Color Morality and Color Cards

Although the industrial revolution in the field of color could produce a variety of desired colors, mass production also resulted in color uniformity including black, white, gray, and brown. Brightly colored products like red, orange, or yellow are still hard to find. Until the late 19th century there was a view that bright colors aimed at

attracting attention were considered inappropriate and should be used sparingly. Colors like gray or light brown are considered to be more dignified and decent, and are therefore mass-produced.

Metaphorically, for example, white is perceived as something pure (Elliot 2015). This statement contradicts the fact that the subjectivity of symbolic meaning is not universal but contextual. In France red is a symbol of nobility (De Saint-Amand 1900:282). This color is also Louis XIV's clothing to counter Spain's black color (McCabe 2015:123; McCabe 2008:238). Louis XIV also wore red heels (Pastoureau 2017:133 and died in the red and golden bedroom in the heart of the palace of Versailles (Bernier 2018:1).

Deleted: ;

Pastoureau (2020) states that positioning, colors symbolically and associating them with moral status represents what Bourdieu referred to in 1979 as a game of distinction. A person's status is shown through the difference between moral and immoral classes in society. In the social world, the system of power relations and symbolic systems play a different 'taste', as the basis of social judgment. According to Bourdieu, the dominant classes impose this domination not by owning wealth and the means of production, but by imposing the legitimacy of their own tastes and values (Bourdieu 2013; Bourdieu 1977).

Deleted: "

Deleted: "

Color uniformity is considered an industry's failure to produce bright colors such as red, blue or green. Industries must abandon low-cost mass products and serve customer segmentation according to their respective social circles (Pastoureau 2020:45-49). Attractive colors are seasonal and not timeless like grays and browns that can be adapted to all seasons. Therefore, if the industry mass-produces bright colors, there is a risk that the product has not been absorbed by the market while the color season is over.

The business community realizes that the color industry is a new business that has a risk of loss. Mistakes in determining colors in production have a great potential for failure to sell the products offered. In 1930, Holbrook Jackson, a journalist and writer, spoke about the importance of color determination and color forecasts (Jackson 1930). The UK established a color management authority called the British Color Council. Jackson introduced a practical knowledge instrument in the form of The Shade Card for textile product color users.

Textile manufacturers, garment manufacturers and retailers need information about colors that are likely to be trending in the coming season. This information is important so that they can prepare requests. The Shade Cards are issued by the Chambre Syndicale des Teinturiers in Lyon France, Saint-Étienne France, the *Société de Teinture and d'Apprêt* Basel, Switzerland. (Błaszczuk 2018:35-37). As a result of World War I, America, which had difficulty getting supplies of dyeing and textiles from Europe, finally formed color forecasting by The Color Association of the United States and the Color Council and Trend Union (Bleicher 2012:34-36).

Formatted: Font:Italic

Deleted: &

The trend of the preferred color has been planned and constructed by color forecasters and color designers 18-24 months before the color becomes trendy. They evaluate and analyze the consumer's preferred color possibilities for the next two-year sales season, allowing sufficient time to match the industry's production schedule. These experts conduct research into people of various age groups. They throw in various color ideas and ask respondents to choose them. All industries whose products are related to color, such as fiber/yarn, textile, leather, plastic, paint, dye, etc., will use the services of color planners and forecasters, so that their products conform to color trends when their products are marketed.

Research in color psychology has shown that 62-90% of consumer product ratings are based on color alone (Moir 2011). Even though technological developments allow individual users to choose colors according to their wishes, color trends constructed by color forecasters and color designers always pay attention to consumer behavior which is influenced by the situation and world conditions that occur at that time, which like or dislike will affect the way we express ourselves. This trend is getting wider when information systems no longer recognize distance and time. History records that color trends are strongly influenced by events related to: (1) Social, political and economic issues; (2) The world and stage of entertainment; (3) The world of art; and (4) seasonal cyclical patterns (Błaszczuk 2012). When social, political and economic conditions deteriorate, people tend to use dim colors. But these colors can be alternated with bright colors to represent hope and optimism.

When the 2008 Olympics were decided to be held in China, the color trend immediately towards red which is the symbolic color of China. Favorite color of art figures. Revitalizing Miami Beach by Leonard Horowitz draws on the historical colors of art Deco artists such as Picasso and Gerrit Rietveld (Miami Design Preservation League 2021; Curtis 2013). The color season cycle repeats about once every 20 years. But with the development of information technology, the cycle of this season has become shorter.

3.2. Color Theme and Fassade Revitalization

Until 1840, exterior color schemes were difficult to find in America. The color scheme became an important document when a landscape architect Andrew Jackson Downing (1815-1852) made it for the book *Cottage Residences* in 1842. As a polemicist, Downing did not like white wooden buildings, and wanted to change the perception of architecture observers. Downing created a palette of grays, yellows, tans, and pinks.

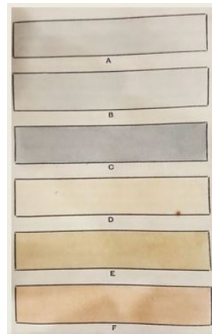


Figure 1: Downing Color Scheme
Source: Downing (1842)

In 1880, Downing's ideas were developed in the form of a multi-color paint scheme and standard ready-mixed paint and color printing by architects. See Figure 1. This color scheme then, became an ideal promotion for the paint industry after the Civil War compared to the unpredictable tones of handmade paint. This standardized color then went hand-in-hand, very useful for buyers in the polychromatic era in the late Victorian era in the early 19th century (Bock 1996:52; Sherwin Williams n.d.; Downing 1842:25).

In 1918, Le Corbusier stated that form preceded the idea of color and that color was only an accessory of form. He considered that form is colorless and color is not independent because it follows form and not vice versa. In 1925, Le Corbusier published *L'art décoratif d'aujourd'hui* (The Decorative Art of Today) which rejected the style of the 1925 Exposition of Decorative Arts which was based on Chinese, Japanese, Indian, and Persian art which was rich in ornamentation, and color. For him, modern decorative art lacks decoration and art Deco is a form of revival of Louis Philippe and Louis XVI moderne (Journel 2015; Corbusier 1987).

Contrary to earlier views, in 1926 Corbusier designed a workers' housing complex, Cité Frugès, in Pessac. Unlike the previous villas which had white exterior walls, but for Cité Frugès, he added brown, yellow and jade green panels. In 1929-1933 Corbusier designed 46 Swiss Pavilion student dormitories at the Cité Universitaire Paris. He designed the main salon decorated with black-and-white nature photo montages. In 1931 Le Corbusier stated that humans need color to live. Color is an element as important as water and fire (Calvano 2006:354).

In 1931, Corbusier created 13 color schemes using 43 color palettes. In 1948, Corbusier replaced the decorations of the Swiss Pavilion with colorful murals that he painted himself. In 1959, he created a polychromatic color scheme using a 63 color palette (Les Couleurs 2021). The Corbusier 1931-1959 color scheme was originally created by the wallpaper company Salubra. In 1997 this color scheme was produced by the Swiss paint company KT Color Co.

The works exhibited at the 1925 Exposition of Decorative Arts are generally inspired by the anthropologist's discovery of Ancient Mexico (Nuttall 1886) and the 1922 discovery of the intact tomb of King of Pharaoh Tutankhamun by British archaeologist Howard Carter (Newberry 1939), European cubist artworks such as Picasso (Klein 2021), pre-Columbian and Caribbean culture (Pool 2018), as well as the emergence of new materials such as chrome plating, stainless steel, and plastic. This exhibition influences the rich style of American architectural luxury with bright and strong colors known as the art Deco style.

In architectural art, the art Deco style is demonstrated by the Chrysler Building (1928-1930) designed by William Van Alen. The interior of the luxurious lobby with yellow and orange nuances is designed to follow the rhythm of the greatness of the Egyptian pyramids. Elevator door with lotus motif ornament from brass and wood shows high quality taste (Knowles 2014:115-116). The art Deco style which was influenced by the Dutch artists, is known as the neoplasticism flow. The distinguishing feature of De Stijl's artist is the use of horizontal and vertical lines with primary colors and achromatic colors of white, black, and gray. They put color only on continuous planes without cuts. consistently uses this style in the architectural design of the Schröder House designed by Gerrit Rietveld (Friedman 2007:65).



Figure 2: Cherokee red at Taliesin West, Scottsdale/Phoenix Arizona

Source: Wikipedia (2021)

In 1936, Frank Lloyd Wright made an organic color scheme for Fallingwater. In collaboration with Martin-Senour Paints, Wright created his favorite color palette called Cherokee Red. This red color evolved from a deep, earthy-brown red, to a dusty orange-tinged, clay red. Wright saw Cherokee red as the base color of the earth in homage to the Native Americans who made pots out of red earth. In Fallingwater, for example, 'Cherokee red' is only for building materials made of iron (Frank Lloyd Wright Foundation 2017; Old House Magazine 2002:32). This color scheme with Cherokee red appeared in other Wright designs such as Taliesin West. See Figure 2.

In the 1970s, colored paint was used to revitalize old cities in Europe. This activity is a collaboration between architects, artists and local residents. The color scheme of the city of Turin (Italy) was designed by architect Giovanni Brino based on the original colors of the city's history and traditions. This model was considered very successful in attracting tourists and was soon followed by other old cities such as Tirana (Italy) by artist Edi Rama, and Rio de Janeiro by Jeroen Koolhaas and Dre Urhahn (Prisco 2013), Querétaro City (Mexico) by artist Boa Mistura, or Girona (Italy) by architect Josep Fuste Comalada (Espelt & Benito 2004), and Gamcheon (South Korea) by Jin Young-Sup (Elisa 2019; Lee 2014). This color approach in urban space is offered to reconcile the desire for conservation and the continuity of the vitality of old city spaces (Boeri 2017).

In 2006, Koolhaas and Urhahn started research to paint the facades of slum areas in Rio de Janeiro in the series Favela Painting. They chose to paint three houses right in the middle of Vila Cruzeiro. The project, which was donated by the Firmeza Foundation (Netherlands) and in collaboration with the paint company Coral-Akzo Nobel,

Deleted: and

Deleted:) (

aims for artists to collaborate with local youth to create community artworks. The Boy With Kite themed mural is a symbol for the children of the *favela*. This initial mural was continued by residents who painted cement hillsides with the title Fish Leaping in a River (Darlington 2010). In its development, the Favela Painting project did not last long because the paint faded. This makes maintenance difficult. Furthermore, the community replaced the paint with locally available sustainable materials, namely lime stucco and pigment tiles in the form of a mosaic (Pavela Painting 2018).



Figure 3: Mural painting with the theme Boy With Kite on the facade in the middle of the slum area of Vila Cruzeiro

Source: Koolhaas (2007)

The revitalization model with this approach is also carried out in Indonesia, such as in Jodipan village, Malang. This program is supported in collaboration with corporate social responsibility (CSR) paint industry companies with participatory-based planning and carried out consistently for the purpose of improving the local community's economy (Wulandari 2017). While the revitalization of other old cities is generally carried out based on local community culture by architects and artists, Jodipan is fully planned with the concept of creating a place branding based on social marketing communication media practitioners. Through the concept of place branding using social media, Jodipan was introduced as a worthy tourist destination to visit (Sulistyaningsih, et al. 2021).

These descriptions show that the choice of color in the past was determined by the architect and the user took advantage of the palettes and color schemes that were not only a favorite of famous architects but also by the current trend situation. The choice of architectural color is part of the style of consumer behavior towards fashion. Industry manufactures and markets products based on architects' color designs. On the other hand, there is a phenomenon of architects making color schemes by involving the participation of the local community. This shows that the determination of color in architecture is also influenced by the development paradigm that developed in the 1970s, where the community participated and was involved in participatory development. The goal is for local communities to be involved in the design and implementation of development projects. With active participation, it is hoped that the projects initiated will be sustainable and bring benefits to local communities (Cornwall 2002; Cornwall & Coelho 2007).

Deleted: and

4. Discussion

The history of the development of the science of color, which was originally the area of expertise of artists and physicists, has attracted the attention of many disciplines. The industrial revolution opened up opportunities for color users not to rely on natural pigments because the industry could create synthetic colors according to the user's wishes. Therefore, the choice of color palettes and schemes no longer depends on the color products provided by the industry but can be done by individual users through the application of a color mixing system.

The freedom of choice color is recognized by the business community regarding color as something dangerous because foam causes the failure of the production offered. This encourages business people to control the freedom of color choice to be limited which is marketed as a color trend for certain seasons. This policy involves not only artists and architects as trendsetters, but also media practitioners such as journalists and writers. However, the

architects also realized that the trend of the paradigm of active community participation could not be avoided. Every community has the right to choose what is considered good for their sustainable future, including improving the quality of their environment through the use of color.

References

- Aguilonius, F. 1613. *Opticorum Libri Sex-Philosophis iuxta ac Mathematicas utiles*. Antwerp: Plantin.
- Aristotle. 1548. *De Coloribus Libellus*. Florentiae: Ex officina Laurentii Torrentini.
- Armstrong, Christopher Drew. 2016. "French Architectural Thought and the Idea of Greece." In *A Companion to Greek Architecture*, edited by Margaret M. Miles, 487-508. Chichester: John Wiley & Sons Inc.
- Barsan, Victor, and Andrei Mercicariu. 2016. "Goethe's Theory of Colors Between the Ancient Philosophy, Middle Ages Occultism and Modern Science." *Cogent Arts & Humanities* (Routledge) 3 (1): 1-29.
- Benjamin Moore. 2021. *Our History*. Accessed August 31, 2021.
- Bernier, Olivier. 2018. *Louis XV*. Boston: New Word City.
- Blaszczyk, Regina Lee. 2012. *The Color Revolution*. CambridgeThe MIT Press.
- Blaszczyk, Regina Lee. 2018. "The Rise of Color Forecasting in the United States and Great Britain." In *The Fashion Forecasters - A Hidden History of Color and Trend Prediction*, edited by Regina Lee Blaszczky and Ben Wubs. London: Bloomsbury Publishing.
- Bleicher, Steven. 2012. *Contemporary Color Theory & Use*. New York: Delmar.
- Bock, Gordon. 1996. *Colorful Issues in Choosing Exterior Paint*. Vol. 24, in *Old-House Journal, Magazine*, 50-55. Denver: Active Interest Media Home Buyer Publications.
- Boeri, Christina. 2017. "Color Loci Placemaking: The Urban Color Between Needs of Continuity and Renewal." *Color Research & Application* (Wiley & Sons) 42: 641-649.
- Bourdieu, Pierre. 2013. *Distinction: A Social Critique of the Judgement of Taste*. Abingdon: Routledge.
- Bourdieu, Pierre. 1977. *Outline of a Theory of Practice*. Translated by Richard Nice. Cambridge: Cambridge University Press.
- Calvano, Jose Luis. 2006. "The Research on Color in Architecture: Brief History, Current Developments, and Possible Future." *Color Research & Application* 31 (4): 350-363.
- Corbuser, Le. 1987. *The Decorative Art of Today*. Massachusetts: MIT Press.
- Cornwall, Andrea, and Vera Schattan P. Coelho. 2007. "Spaces for Change? The Politics of Participation in New Democratic Arenas." In *Spaces for Change? The Politics of Participation in New Democratic Arenas*, edited by Andrea Cornwall and Vera Schattan P. Coelho, 1-32. London: Zed Book.
- Cornwall, Andrea. 2002. *Beneficiary, Consumer, Citizen: Perspectives on Participation for Poverty Reduction - Sida Studies No. 2*. Sida Studies.
- Curtis, James R. 2013. "Art Deco Architecture in Miami Beach." *Journal of Cultural Geography* (Routledge) 20 (46): 53-63.
- Darlington, Shasta. 2010. *Rio Slum Transformed into Canvas Bursting With Color*. November 17. Accessed August 31, 2021. <http://edition.cnn.com/2010/WORLD/americas/11/17/brazil.beautiful.favela/index.html>
- De Saint-Amand, mber. 1900. *Women of Versailles: The Court of Louis XIV*. Translated by Gilbert Elizabeth Martin. New York: Charles Scribner's Sons.
- Diane, Tracy, and Tom Cassidy. 2009. *Colour Forecasting*. Oxford: Blackwell Publishing Ltd.
- Downing, Andrew Jackson. 1842. *Cottage Residences Or, A Series of Designs for Rural Cottages and Cottage Villas, and Their Gardens and Grounds. Adapted to North America*. New York: Wiley and Outnam.
- Duck, Michael John, and Michael Petry. 2016. *Goethe's "Exposure Of Newton's Theory": A Polemic On Newton's Theory Of Light And Colour*. London: Imperial College Press.
- Elisa. 2019. *Membedah Kampung Instagrammable Gamcheon*. November 26. Accessed August 31, 2021. <https://rujak.org/membedah-kampung-instagrammable/>.
- Ellingham, Ian. 2019. "Why Not Colour In Architecture?" *The Right Angle Journal*, (Naylor) 2 (4).
- Elliot, Andrew J. 2015. *Frontiers in Psychology* 6: 1-8.
- Espelt, Nuria Gali, and Antonio Donaire Benito. 2004. "The Social Construction of The Image of Girona: A Methodological Approach." *Tourism Management* (Elsevier) 26 (5).
- Frank Lloyd Wright Foundation. 2017. *The Whirling Arrow*. Accessed September 30, 2021. <https://franklloydwright.org/about-us/>.
- Friedman, Alice T. 2007. *Women and the Making of the Modern House: A Social and Architectural History*. New Haven: Yale University Press.
- Garfield, Simon. 2018. *Mauve: How One Man Invented a Colour that Changed the World*. Edin burgh: Canongate Books Ltd.
- Gasparini, Katia. 2021. "The Colour of Emerging Textile for Urban Regeneration: The Role of Technology Between Experimentations and Craftsmanship." *Color Research & Application* (John Wiley & Sons) 538-545.

- Jackson, Holbrook. 1930. "Colour Determination in The Fashion Trades." *Journal of the Royal Society of Arts* (RSA The Royal Society for Arts, Manufactures and Commerce) 78 (4034): 492-513.
- Journel, Guillemette Morel. 2015. *Le Corbusier Construire la vie Moderne*. Paris: Editions du Patrimoine.
- Ke-Run, Li, Yang Ya-Qian, and Zheng Zhi-Qiang. 2019. "Research on Color Harmony of Building Façades." *Color Research & Application* (John Wiley and Sons) 45 (1): 105-119.
- Klein, Dan. 2021. *What is Art Deco?* *From the Archives*. Accessed August 31, 2021. <https://www.artdeco.org/archives>.
- Knowles, Eric. 2014. *Art Deco*. U.K.: Shire Publications.
- Koolhaas, Jeroen. 2007. *Boy With Kite*. August 31. Accessed 2021. <https://jeroenkoolhaas.com/2007-BOY-WITH-KITE>.
- Lambourne, R. 1999. "Paint Composition and Applications — A General Introduction." In *Paint and Surface Coatings - Theory and Practice*, edited by R. Lambourne and T. A. Striven, 1-18. Cambridge: Woodhead Publishing Ltd.
- Lee, Yeun Sook. 2014. "A Local Asset Based Regeneration Process of Gamcheon Culture Village Busan." *Korea Institute of Ecological Architecture and Environment Journal* 14 (3): 111-120.
- Les Couleurs. 2021. *Les Couleurs*. Accessed August 31, 2021. <https://www.lescouleurs.ch/en/the-colours/colour-keyboards/colour-keyboard-1931>.
- McCabe, Ina Baghdiantz. 2008. *Orientalism in Early Modern France: Eurasian Trade, Exoticism, and the Ancien Regime*. Oxford: Berg.
- McCabe, Ina Badiantz. 2015. *A History of Global Consumption: 1500 - 1800*. London: Routledge.
- Miami Design Preservation League. 2021. *From the Archive – The Color of Leonard Horowitz's Life* Accessed August 31, 2021. <https://mdpl.org/archives/2021/07/the-colors-of-leonard-horowitzs-life/>.
- Moir, Diane E. 2011. "Trademark Protection of Color Alone: How and When Does a Color Develop Secondary Meaning and Why Color Marks Can Never Be Inherently Distinctive." *Touro Law Review* (Touro Law Center) 27 (2).
- Newberry, P. E. 1939. "Howard Carter." *The Journal of Egyptian Archaeology* (Egypt Exploration Society) 25 (1): 67-69.
- Newton, Isaac. 1730. *Opticks: Or a Treatise of the Reflections, Refractions, Inflections & Colours of Light*. London: William Innys.
- Nuttall, Zelia. 1886. "The Terracotta Heads of Teotihuacan." *The American Journal of Archaeology and of the History of the Fine Arts*. (The American Journal of Archaeology and of the History of the Fine Arts) 2: 157-178.
- Old House Magazine. 2002. *Old House Magazine*. Vol. 30 (5). Active Interest Media, Inc.
- Orna, Mary Virginia. 2013. "Introduction: Colors, Natural and Synthetic, in the Ancient World." In *Springer Briefs in Molecular Science: History of Chemistry*, edited by Virginia Mary Orna, 1-10. New York: Springer.
- Pastoureau, Michel. 2020. *The Colours of Our Memories*. Translated by Janet Lloyd. London: Polity Press.
- Pastoureau, Michel. 2017. *Red The History of a Color*. Princeton: Princeton University Press.
- Pavela Painting. 2018. *Pavela Painting*. Accessed August 31, 2021. <https://favelapainting.com/PROJECTS>.
- Plato. 1892. *Republic. Timaeus. Critias - The Dialogues of Plato*. Translated by B. Jowett. Vol. II. New York: Charles Scribner's Sons.
- Pool, Rachel Frances. 2018. "The Misconceived Image in Society of American Art Deco Architecture and Design." *The International Journal of the Image* (Common Ground Research Networks) 9 (2): 37-53.
- Prisco, Joanna. 2013. *Expansive Mural Makeover*. November 2. Accessed August 31, 2021. <https://abcnews.go.com/Lifestyle/artists-aim-rebrand-rio-slums-expansive-mural-makeover/story?id=20740743>.
- Sherwin Williams. n.d. *Heritage Colors, Authentic Exterior Colors for American Buildings 1820/1920*. Cleveland: The Sherwin Williams Company.
- Sulistyaningsih, Tri, Jainuri Jainuri, Salahudin Salahudin, Hazel Dapat Jovita, and Achmad Nurmandi. 2021. "Can Combined Marketing and Planning-oriented of Community-based Social Marketing (CBSM) Project Successfully Transform the Slum Area to Tourism Village? A Case Study of the Jodipan Colorful Urban Village, Malang, Indonesia." *Journal of Nonprofit & Public Sector Marketing* (Routledge, Taylor & Francis Group).
- Treisman, Michel. 1996. "Why Goethe Rejected Newton's Theory of Light." *Perception* (Sage Publications) 25: 1219-1222.
- Von Castell, Christoph, Heiko Hecht, and Daniel Oberfeld. 2018. "Bright Paint Makes Interior-Space Surfaces Appear Farther Away." *plos One* (Public Library of Science) 13 (9): 1-15.
- Von Goethe, Johann Wolfgang. 1970. Cambridge: MIT Press.
- Wikipedia. 2021. *Taliesin West*. June 26. Accessed August 31, 2021. https://en.wikipedia.org/wiki/Taliesin_West.
- Wulandari, Prisca Kiki. 2017. "Inovasi Pemuda Dalam Mendukung Ketahanan Ekonomi Keluarga (Studi Di Kampung Warna-Warni Kelurahan Jodipan, Kecamatan Blimbing, Kota Malang)." *Jurnal Ketahanan Nasional* 23 (3): 300-319.

Abstract

Prior to the 1800s, research on color was very limited and tended to be speculative, physical, psychological, cultural, psychological, artistic, and perhaps even spiritual. Research on color is generally limited to topics related to harmony and color perception as conducted by Von Castell, Hecht and Oberfeld (2018), Ke-Run, Ya-Qian and Zhi-Qiang (2019), Fontoura and Menu (2021) and color technology as done by Gasparini (2021).

Researchers may not be interested in discussing building exterior color as an important aspect for the practical reason that most building exteriors are not explicitly colored. Even

though historical findings on the ruins as written by Jacques Ignace Hittorff show that the Greek architecture of Empedocles in Selinus Sicily is believed to be white, it turns out that this is not so, but brightly colored polychromatic (Ellingham, 2019; Armstrong 2016:501). This article discusses how the placement of architectural colors is not only as a building decoration but as an element inherent in the unity of design. from the past to

In the past, artists and scientists tended to think that color was the result of light and dark alone. The size of the scale of darkness makes one color different from another. Red is pure white light that gets the least amount of dark effect. The darkest scale produces black, while the smaller one produces blue. The theory of light and darkness has also been written by Greek philosophers since the Middle Ages, such as Plato (1892:559) in *Timaeus* (390 BC), or his student Aristotle (384-322 BC) that all colors are produced by mixing black and white (Aristotle 1548) in *De Coloribus* (330 BC). In 1613 François d'Aguilon (1567-1617) a mathematician from Brussels published the *Opticorum Libri Sex* which, among other things, wrote about the behavior of light and color. For him, the primary colors are white and black. From here then produced other noble colors, namely red, blue, and yellow. Furthermore, among these colors are produced purple, green, and orange (Aguilonius 1613).

Newton doubted and refuted the theory of the artist and scientist by experimenting with a beam of light passing through two prisms. In 1672, he proved that light is not white or homogeneous, but heterogeneous and consists of different colors due to different refractive indices. When refracted by a prism, light produces a spectrum consisting of red, orange, yellow, green, blue, indigo, and violet light. The first prism converts white light into a spectrum of colors and the second prism recombines colored light into white light (Newton 1730).

In 1856 William Perkin discovered the first artificial color of coal tar waste. This bluish purple color is called *mauve* (France) which soon became a trendsetter (Garfield 2018:8). Furthermore, the industrial revolution in the field of color also made scientists carry out various experiments to produce artificial colors that nature could not provide. Various kinds of color pigments can be mass produced at an economical cost. This industrial revolution also had a major influence on the development of paint. Paint that initially functions as a surface coating, for example, protects iron and steel from rusting and corrosion increases as an aesthetic function (Lambourne 1999:2-4), with a variety of color

choices according to user preferences. In 1982 the paint company Benjamin Moore introduced a color matching system. The choice of product colors that were originally determined by the manufacturer and distributed to agents en masse, can now be made by anyone (Benjamin Moore 2021). Each user can design the color mix as desired at an individual level.

Research Methods

The research uses a historical approach with data interpretation methods. The process begins with collecting literature data related to the topic of architectural color research and the color industrial revolution. The data collected is digital data in the form of documents in the form of text and images. The data comes from historical sources and traces that have been validated and considered valid. Data verification using external and internal criticism methods. The collected data is then grouped by taxonomy. Each data in a group is analyzed with each other. Furthermore, it is synthesized by analyzing data from other groups to obtain conclusions that will be presented in the form of historiography.

Results

Color Morality to Color Cards

Although the industrial revolution in the field of color could produce a variety of desired colors, mass production also resulted in color uniformity including black, white, gray and brown. Brightly colored products like red, orange or yellow are still hard to find. Until the late 19th century there was a view that bright colors aimed at attracting attention were considered inappropriate and should be used sparingly. Colors like gray or light brown are considered to be more dignified and decent, and are therefore mass-produced. Metaphorically, for example, white is perceived as something pure (Elliot 2015). This statement contradicts the fact that the subjectivity of symbolic meaning is not universal but contextual. For example, in France red is a symbol of nobility (De Saint-Amand 1900:282). This color is also Louis XIV's clothing to counter Spain's black color (McCabe 2015:123; McCabe 2008:238). Louis XIV also wore red heels (Pastoureau 2017:133 and died in the red and golden bedroom in the heart of the palace of Versailles

Pastoureau (2020) argues that positioning colors symbolically and associating them with moral status represents what Bourdieu referred to in 1979 as a game of distinction. A person's status is shown through the difference between moral and immoral classes in society. In the social world, the system of power relations and symbolic systems play a different "taste" as the basis of social judgment. According to Bourdieu, the dominant classes impose this domination not by owning wealth and the means of production, but by imposing the legitimacy of their own tastes and values (Bourdieu 2013; Bourdieu 1977).

Color uniformity is considered an industry's failure to produce bright colors such as red, blue or green. Industries must abandon low-cost mass products and serve customer

segmentation according to their respective social circles(Pastoureau 2020:45-49). Attractive colors are seasonal and not timeless like grays and browns that can be adapted to all seasons. Therefore, if the industry mass-produces bright colors, there is a risk that the product has not been absorbed by the market while the color season is over.

Business people realize that the color industry is a new business that has a risk of loss. Errors in determining colors in production have a great potential for failure to sell the products offered. In 1930, Holbrook Jackson, a journalist and writer, spoke about the importance of color determination and color forecasts (Jackson 1930). The UK established a color management authority called the British Color Council. Jackson introduced a practical knowledge instrument in the form of The Shade Card for textile product color users

Textile manufacturers, garment manufacturers and retailers need information about colors that are likely to be trending in the coming season. This information is important so that they can prepare requests. The Shade Cards are issued by the Chambre Syndicale des Teinturiers in Lyon France, Saint-Étienne France, the Société de Teinture & d'Apprêt Basel, Switzerland. (Blaszczyk 2018:35-37). As a result of World War I, America, which had difficulty getting supplies of dyeing and textiles from Europe, finally formed color forecasting by The Color Association of the United States and the Color Council and Trend Union (Bleicher 2012:34-36).

The color trends are planned and constructed by color forecasters and color designers 18-24 months before the color becomes trendy. They evaluate and analyze the consumer's preferred color possibilities for the next two-year sales season, allowing sufficient time to match the industry's production schedule. These experts conduct research into people of various age groups. They throw in various color ideas and ask respondents to choose them. The most selected colors are analyzed and evaluated to be used as a 'color prediction' (Diane and Cassidy 2009:84). All industries whose products are related to color, such as fiber/yarn, textile, leather, plastic, paint, dye, etc., will use the services of color planners and forecasters, so that their products are in accordance with the color trends that occur at the time. their products are marketed.

Research in color psychology has shown that 62-90% of consumer product ratings are based on color alone (Moir 2011). Even though technological developments allow individual users to choose colors according to their wishes, color trends constructed by color forecasters and color designers always pay attention to consumer behavior which is influenced by the situation and world conditions that occur at that time, which like or dislike will affect the way we express ourselves. This trend is getting wider when information systems no longer recognize distance and time.

History records that color trends are strongly influenced by events related to: (1) Social, political and economic issues; (2) The world and stage of entertainment; (3) The world of art; and (4) seasonal cyclical patterns (Blaszczyk, The Color Revolution 2012). When social, political and economic conditions deteriorate, people tend to use dim colors. But these colors can be alternated with bright colors to represent hope and optimism. When the 2008 Olympics was decided to be held in China, the color trend immediately towards red which is the symbolic color of China. Favorite color of art figures. Revitalizing Miami Beach by Leonard Horowitz draws on the historical colors of Art Deco artists such as Picasso and Gerrit Rietveld (Miami Design

Preservation League 2021; Curtis 2013). The color season cycle repeats about once every 20 years. But with the development of information technology, the cycle of this season has become shorter.

Color Theme to Fasad Revitalization

Until 1840, exterior color schemes were difficult to find in America. The color scheme became an important document when a landscape architect Andrew Jackson Downing (1815-1852) made it for the book *Cottage Residences* in 1842. As a polemicist, Downing did not like white wooden buildings, and wanted to change the perception of observers. architecture. Downing created a palette of grays, yellows, tans, and pinks. In 1880 Downing's ideas were developed in the form of a multi-color paint scheme and standard ready-mixed paint and color printing by architects. This color scheme then became an ideal promotion for the paint industry after the Civil War compared to the unpredictable tones of handmade paint. This standardized color then went hand-in-hand, very useful for buyers in the polychromatic era in the late Victorian era in the early 19th century (Bock 1996:52; Sherwin Williams n.d.; Downing (Downing 1842:25).

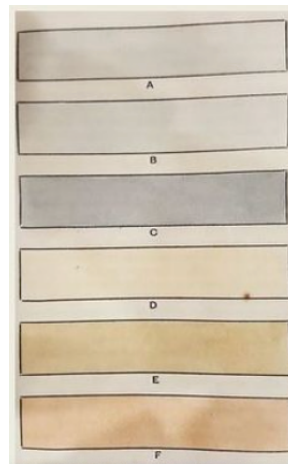


Figure 1. Downing Color Scheme (Downing 1842)

In 1918, Le Corbusier stated that form preceded the idea of color and that color was only an accessory of form. He considered that form is colorless and color is not independent because it follows form and not vice versa. In 1925, Le Corbusier published *L'art décoratif d'aujourd'hui* (The Decorative Art of Today) which rejected the Art Deco style of the 1925 Exposition of Decorative Arts which was based on Chinese, Japanese, Indian, and Persian art which was rich in ornamentation. and color. For him, modern decorative art lacks decoration and art deco is a form of revival of Louis Philippe and Louis XVI moderne (Journal 2015; Corbusier 1987).

Contrary to earlier views, in 1926 Corbusier designed a workers' housing complex, *Cité Frugès*, in Pessac. Unlike the previous villas which had white exterior walls, but for *Cité Frugès* he added brown, yellow and jade green panels. In 1929-1933 Corbusier designed

46 Swiss Pavilion student dormitories at the Cité Universitaire Paris. He designed the main salon decorated with black-and-white nature photo montages. In 1931 Le Corbusier stated that humans need color to live. Color is an element as important as water and fire (Calvano 2006:354). In 1931 Corbusier created 13 color schemes using 43 color palettes. In 1948, Corbusier replaced the decorations of the Swiss Pavilion with colorful murals that he painted himself. In 1959, he created a polychromatic color scheme using a 63 color palette (Les Couleurs 2021). The Corbusier 1931-1959 color scheme was originally created by the wallpaper company Salubra. In 1997 this color scheme was produced by the Swiss paint company KT Color Company.

The works exhibited at the 1925 Exposition of Decorative Arts are generally inspired by the anthropologist's discovery of Ancient Mexico (Nuttall 1886) and the 1922 discovery of the intact tomb of King of Pharaoh Tutankhamun by British archaeologist Howard Carter (Newberry 1939), European cubist artworks such as Picasso (Klein 2021), pre-Columbian and Caribbean culture (Pool 2018), as well as the emergence of new materials such as chrome plating, stainless steel, and plastic. This exhibition influences the rich style of American architectural luxury with bright and strong colors known as the Art Deco style.

In architectural art, the art deco style is demonstrated by the Chrysler Building (1928-1930) designed by William Van Alen. The interior of the luxurious lobby with yellow and orange nuances is designed to follow the rhythm of the greatness of the Egyptian pyramids. Elevator door with lotus motif ornament from brass and wood shows high quality taste (Knowles 2014:115-116). The art deco style which was influenced by the Dutch artists, known as the neoplasticism flow. The distinguishing feature of De Stijl's artist is the use of horizontal and vertical lines with primary colors and achromatic colors of white, black, and gray. They put color only on continuous planes without cuts. consistently uses this style in the architectural design of the Schröder House designed by Gerrit Rietveld (Friedman 2007:65)

In 1936, Frank Lloyd Wright created an organic color scheme for Fallingwater. In collaboration with Martin-Senour Paints, Wright created his favorite color palette called Cherokee Red. This red color evolved from a deep, earthy-brown red, to a dusty orange-tinged, clay red. Wright saw Cherokee red as the base color of the earth in homage to the Native Americans who made pots out of red earth. In Fallingwater, for example, 'cherokee red' is only for building materials made of iron (Frank Lloyd Wright Foundation 2017; Old House Magazine 2002:32). This color scheme with Cherokee red later appeared in other Wright designs such as Taliesin West. Figure



Figure 2 Warna Cherokee Red di Taliesin West, Scottsdale/Phoenix Arizona.
Source: (Wikipedia 2021)

In the 1970s, colored paint was used to revitalize old cities in Europe. This activity is a collaboration between architects, artists and local residents. The color scheme of the city of Turin (Italy) was designed by architect Giovanni Brino based on the original colors of the city's history and traditions. This model was considered very successful in attracting tourists and was soon followed by other old cities such as Tirana (Italy) by artist Edi Rama, and Rio de Janeiro by Jeroen Koolhaas and Dre Urhahn (Prisco 2013), Querétaro City (Mexico) by artist Boa Mistura, or Girona (Italy) by architect Josep Fuste Comalada (Espelt and Benito 2004), and Gamcheon (South Korea) by Jin Young-Sup (Elisa 2019) (Lee 2014). This color approach in urban space is offered to reconcile the desire for conservation and the continuity of the vitality of old city spaces (C. Boeri 2017).

In 2006, Koolhaas and Urhahn started research to paint the facades of slum areas in Rio de Janeiro in the series Favela Painting. They chose to paint three houses right in the middle of Vila Cruzeiro. The project, which was donated by the Firmeza Foundation (Netherlands) and in collaboration with the paint company Coral-Akzo Nobel, aims for artists to collaborate with local youth to create community artworks. The Boy With Kite themed mural is a symbol for the children of the favela. This initial mural was continued by residents who painted cement hillsides with the title Fish Leaping in a River (Darlington 2010). In its development the Favela Painting project did not last long because the paint faded. This makes maintenance difficult. Furthermore, the community replaced the paint with locally available sustainable materials, namely lime stucco and pigment tiles in the form of a mosaic (Pavela Painting 2018).



Figure 3. Lukisan mural dengan tema Boy With Kite pada fasad di tengah area slum Vila Cruzeiro
Source: (Koolhaas 2007)

The revitalization model with this approach is also carried out in Indonesia, such as in Jodipan village, Malang. This program is supported in collaboration with corporate social responsibility (CSR) paint industry companies. with participatory-based planning and carried out consistently for the purpose of improving the local community's economy (Wulandari 2017). While the revitalization of other old cities is generally carried out based on local community culture by architects and artists, Jodipan is fully planned with the concept of creating a place branding based on social marketing by communication media practitioners. Through the concept of place branding using social media, Jodipan was introduced as a worthy tourist destination to visit (Sulistyaningsih, et al. 2021).

These descriptions show that the choice of color in the past was determined by the architect and the user took advantage of the palettes and color schemes that were not only a favorite of famous architects but also by the current trend situation. The choice of architectural color is part of the style of consumer behavior towards fashion. Industry manufactures and markets products based on architects' color designs. On the other hand, there is a phenomenon of architects making color schemes by involving the participation of the local community. This shows that the determination of color in architecture is also influenced by the development paradigm that developed in the 1970s where the community participated and was involved in participatory development. The goal is for local communities to be involved in the design and implementation of development projects. With active participation, it is hoped that the projects initiated will be sustainable and bring benefits to local communities (Cornwall 2002; Cornwall and Coelho 2007).

Conslusions

The history of the development of the science of color, which was originally the area of expertise of artists and physicists, has attracted the attention of many disciplines. The industrial revolution opened up opportunities for color users not to rely on natural pigments because the industry could create synthetic colors according to the user's wishes. Therefore, the choice of color palettes and schemes no longer depends on the color

products provided by the industry but can be done by individual users through the application of a color mixing system.

The history of the development of the science of color, which was originally the area of expertise of artists and physicists, has attracted the attention of many disciplines. The industrial revolution opened up opportunities for color users not to rely on natural pigments because the industry could create synthetic colors according to the user's wishes. Therefore, the choice of color palettes and schemes no longer depends on the color products provided by the industry but can be done by individual users through the application of a color mixing system.

References:

Aguilonius, F. 1613. *Opticorum Libri Sex-Philosophis iuxta ac Mathematicis utiles*. Antwerp: Plantin.

Aristotle. 1548. *De Coloribus Libellus*. Florentiae : Ex officina Laurentii Torrentini.

Armstrong, Christopher Drew. 2016. "French Architectural Thought and the Idea of Greece." In *A Companion to Greek Architecture*, edited by Margaret M. Miles , 487-508. Chichester: John Wiley & Sons Inc.

Barsan, Victor, and Andrei Merticariu. 2016. "Goethe's Theory of Colors Between the Ancient Philosophy, Middle Ages Occultism and Modern Science." *Cogent Arts & Humanities* (Routledge) 3 (1): 1-29.

Benjamin Moore. 2021. *Our History*. Accessed August 31, 2021.

Bernier , Olivier. 2018. *Louis XV*. Boston: New Word City.

Blaszczyk, Regina Lee. 2012. *The Color Revolution*. CambridgeThe MIT Press.

Blaszczyk, Regina Lee. 2018. "The Rise of Color Forecasting in the United States and Great Britain." In *The Fashion Forecasters - A Hidden History of Color and Trend Prediction*, edited by Regina Lee Blaszczyk and Ben Wubs. London: Bloomsbury Publishing Plc.

Bleicher, Steven. 2012. *Contemporary Color Theory & Use*. New York: Delmar.

Bock, Gordon. 1996. *Colorful Issues in Choosing Exterior Paint*. Vol. 24, in *Old-House Journal, Magazine*, 50-55. Denver: Active Interest Media Home Buyer Publications.

Boeri, Christina. 2017. "Color Loci Placemaking: The Urban Color Between Needs of Continuity and Renewal." *Color Research & Application* (Wiley & Sons) 42: 641-649.

Bourdieu, Pierre. 2013. *Distinction: A Social Critique of the Judgement of Taste*. Abingdon: Routledge.

- Bourdieu,, Pierre. 1977. *Outline of a Theory of Practice*. Translated by Richard Nice. Cambridge: Cambridge University Press.
- Calvano, Jose Luis. 2006. "The Research on Color in Architecture: Brief History, Current Developments, and Possible Future." *Color Research & Application* 31 (4): 350-363.
- Corbusier, Le. 1987. *The Decorative Art of Today*. Massachusetts: MIT Press.
- Cornwall, Andrea, and Vera Schattan P. Coelho. 2007. "Spaces for Change? The Politics of Participation in New Democratic Arenas." In *Spaces for Change? The Politics of Participation in New Democratic Arenas*, edited by Andrea Cornwall and Vera Schattan P. Coelho, 1-32. London: Zed Book.
- Cornwall, Andrea. 2002. *Beneficiary, Consumer, Citizen: Perspectives on Participation for Poverty Reduction - Sida Studies No. 2*. Sida Studies.
- Curtis, James R. 2013. "Art Deco Architecture in Miami Beach." *Journal of Cultural Geography* (Routledge) 20 (46): 53-63.
- Darlington, Shasta. 2010. *Rio Slum Transformed into Canvas Bursting With Color*. November 17. Accessed August 31, 2021. <http://edition.cnn.com/2010/WORLD/americas/11/17/brazil.beautiful.favela/index.html>.
- De Saint-Amand, mber. 1900. *Women of Versailles: The Court of Louis XIV*. Translated by Gilbert Elizabeth Martin. New York: Charles Scribner's Sons.
- Diane, Tracy, and Tom Cassidy. 2009. *Colour Forecasting*. Oxford: Blackwell Publishing Ltd.
- Downing , Andrew Jackson. 1842. *Cottage Residences Or, A Series of Designs for Rural Cottages and Cottage Villas, and Their Gardens and Grounds. Adapted to North America*. New York: Wiley and Outnam.
- Duck, Michael John, and Michael Petry. 2016. *Goethe's "Exposure Of Newton's Theory": A Polemic On Newton's Theory Of Light And Colour*. London: Imperial College Press.
- Elisa. 2019. *Membedah Kampung Instagrammable Gamcheon*. November 26. Accessed August 31, 2021. <https://rujak.org/membedah-kampung-instagrammable/>.
- Ellingham,, Ian. 2019. "Why Not Colour In Architecture?" *The Right Angle Journal*, (Naylor) 2 (4).
- Elliot, Andrew J. 2015. *Frontiers in Psychology* 6: 1-8.
- Espelt, Nuria Gali, and Antonio Donaire Benito. 2004. "The Social Construction of The Image of Girona: A Methodological Approach." *Tourism Management* (Elsevier) 26 (5).

- Frank Lloyd Wright Foundation. 2017. *The Whirling Arrow*. Accessed September 30, 2021. <https://franklloydwright.org/about-us/>.
- Friedman, Alice T. 2007. *Women and the Making of the Modern House: A Social and Architectural History*. New Haven: Yale University Press.
- Garfield , Simon. 2018. *Mauve: How One Man Invented a Colour that Changed the World*. Edinburgh: Canongate Books Ltd.
- Gasparini, Katia. 2021. "The Colour of Emerging Textile for Urban Regeneration: The Role of Technology Between Experimentations and Craftsmanship." *Color Research & Application* (John Wiley & Sons) 538-545.
- Jackson, Holbrook. 1930. "Colour Determination in The Fashion Trades." *Journal of the Royal Society of Arts* (RSA The Royal Society for Arts, Manufactures and Commerce) 78 (4034): 492-513.
- Journel, Guillemette Morel. 2015. *Le Corbusier Construire la vie Moderne*. Paris: Editions du Patrimoine.
- Ke-Run, Li, Yang Ya-Qian, and Zheng Zhi-Qiang. 2019. "Research on Color Harmony of Building Façades." *Color Research & Application* (John Wiley and Sons) 45 (1): 105-119.
- Klein, Dan. 2021. *What is Art Deco? From the Archives*. Accessed August 31, 2021. <https://www.artdeco.org/archives>.
- Knowles , Eric. 2014. *Art Deco*. U.K.: Shire Publications.
- Koolhaas, Jeroen. 2007. *Boy With Kite*. August 31. Accessed 2021. <https://jeroenkoolhaas.com/2007-BOY-WITH-KITE>.
- Lambourne, R. 1999. "Paint Composition and Applications — A General Introduction." In *Paint and Surface Coatings - Theory and Practice*, edited by R. Lambourne and T. A. Striven, 1-18. Cambridge: Woodhead Publishing Ltd.
- Lee, Yeun Sook. 2014. "A Local Asset Based Regeneration Process of Gamcheon Culture Village Busan." *Korea Institute of Ecological Architecture and Environment Journal* 14 (3): 111-120.
- Les Couleurs. 2021. *Les Couleurs*. Accessed August 31, 2021. <https://www.lescouleurs.ch/en/the-colours/colour-keyboards/colour-keyboard-1931>.
- McCabe, Ina Baghdiantz. 2008. *Orientalism in Early Modern France: Eurasian Trade, Exoticism, and the Abcien Regime*. Oxford: Berg.
- McCabe, Ina Badiantz. 2015. *A History of Global Consumption: 1500 - 1800*. London: Routledge.

- Miami Design Preservation League. 2021. *From the Archive – The Color of Leonard Horowitz’s Life* Accessed August 31, 2021. <https://mdpl.org/archives/2021/07/the-colors-of-leonard-horowitzs-life/> .
- Moir, Diane E. 2011. "Trademark Protection of Color Alone: How and When Does a Color Develop Secondary Meaning and Why Color Marks Can Never Be Inherently Distinctive." *Touro Law Review* (Touro Law Center) 27 (2).
- Newberry, P. E. 1939. "Howard Carter." *The Journal of Egyptian Archaeology* (Egypt Exploration Society) 25 (1): 67-69.
- Newton, Isaac. 1730. *Opticks: Or a Treatise of the Reflections, Refractions, Inflections & Colours of Light*. London: William Innys.
- Nuttall, Zelia. 1886. "The Terracotta Heads of Teotihuacan." *The American Journal of Archaeology and of the History of the Fine Arts*. (The American Journal of Archaeology and of the History of the Fine Arts) 2: 157-178.
- Old House Magazine. 2002. *Old House Magazine*. Vol. 30 (5). Active Interest Media, Inc.
- Orna, Mary Virginia. 2013. "Introduction: Colors, Natural and Synthetic, in the Ancient World." In *Springer Briefs in Molecular Science: History of Chemistry*, edited by Virginia Mary Orna, 1-10. New York: Springer.
- Pastoureau , Michel. 2020. *The Colours of Our Memories*. Translated by Janet Lloyd. London: Polity Press.
- Pastoureau, Michel. 2017. *Red The History of a Color*. Princeton: Princeton University Press.
- Pavela Painting. 2018. *Pavela Painting*. Accessed August 31, 2021. <https://favelapainting.com/PROJECTS>.
- Plato. 1892. *Republic. Timaeus. Critias - The Dialogues of Plato*. Translated by B. Jowett. Vol. II. New York: Charles Scribner's Sons.
- Pool, Rachel Frances. 2018. "The Misconceived Image in Society of American Art Deco Architecture and Design." *The International Journal of the Image* (Common Ground Research Networks) 9 (2): 37-53.
- Prisco, Joanna. 2013. *Expansive Mural Makeover*. November 2. Accessed August 31, 2021. <https://abcnews.go.com/Lifestyle/artists-aim-rebrand-rio-slums-expansive-mural-makeover/story?id=20740743>.
- Sherwin Williams. n.d. *Heritage Colors, Authentic Exterior Colors for American Buildings 1820/1920*. Cleveland: The Sherwin Williams Company.
- Sulistyaningsih, Tri, Jainuri Jainuri , Salahudin Salahudin, Hazel Dapat Jovita, and Achmad Nurmandi. 2021. "Can Combined Marketing and Planning-oriented of Community-based Social Marketing (CBSM) Project Successfully Transform the

Slum Area to Tourism Village? A Case Study of the Jodipan Colorful Urban Village, Malang, Indonesia." *Journal of Nonprofit & Public Sector Marketing* (Routledge, Taylor & Francis Group).

Treisman, Michel. 1996. "Why Goethe Rejected Newton's Theory of Light." *Perception* (Sage Publications) 25: 1219-1222.

Von Castell, Christoph, Heiko Hecht, and Daniel Oberfeld. 2018. "Bright Paint Makes Interior-Space Surfaces Appear Farther Away." *plos One* (Public Library of Science) 13 (9): 1-15.

Von Goethe, Johann Wolfgang. 1970. Cambridge: MIT Press.

Wikipedia. 2021. *Taliesin West*. June 26. Accessed August 31, 2021. https://en.wikipedia.org/wiki/Taliesin_West.

Wulandari, Prisca Kiki. 2017. "Inovasi Pemuda Dalam Mendukung Ketahanan Ekonomi Keluarga (Studi Di Kampung Warna-Warni Kelurahan Jodipan, Kecamatan Blimbing, Kota Malang)." *Jurnal Ketahanan Nasional* 23 (3): 300-319.

Color in Architecture: Before and After Industry Revolution

Abstract

Color as a visual element cannot be separated from architectural design. The development of knowledge about color involved artists and scientists. In the past, color was always associated with the activities of artists as creators of decorative works using pigments produced by nature. Artists and scientists assume that color occurs due to the influence of light and dark which is homogeneous. This was later refuted by Newton's findings that color is produced by heterogeneous light. Different colors are a result of different refractive indexes.

The discovery of artificial colors by Perkin encouraged the industry to create colors not only to produce colors that exist in nature, but also according to the wishes of the user as an individual. The opportunity to use colors according to the needs of individual users then encourages businesses to control colors so that the industry does not suffer losses if the colors of the products they produce do not sell well in the market. They work closely with color forecasters and color designers to determine color trends according to the interests of producers through color cards. This condition is followed by architects who create color schemes based on their own favorite color palette.

This article finds out how the development of science positions color in architectural works? The research was conducted with a historical approach and data interpretation methods through literature review.

Keywords: color, color forecast, color card, color scheme, architecture

1. Introduction

Color is a visual experience that greatly influences human life. Colors have now entered all activities of human life following the development of science and technology. In the past, color was closely related to the activities of artists. To create decorative art in their cave dwellings, in cemeteries, or on their bodies, they use colors produced by nature or synthetically, for example from ochres or iron earths for red, orange, yellow, brown, and gold. The black color comes from charcoal and the white color comes from animal bones. In the findings of paintings in caves, it appears that the artist used natural and synthetic colors to produce various palettes of hues and shades. But the colors of interest are blue, red and yellow (Orna 2013:2-9; Lambourne 1999:1).

Prior to the 1800s, research on color was very limited and tended to be speculative, physical, psychological, cultural, psychological, artistic, and perhaps even spiritual. Research on color is generally limited to topics related to harmony and color perception as conducted by Von Castell, Hecht and Oberfeld (2018), Ke-Run, Ya-Qian and Zhi-Qiang (2019), Fontoura and Menu (2021) and color technology as is done by Gasparini (2021). Researchers may not be interested in discussing the building exterior color as an important aspect for the practical reason that most building exteriors are not explicitly colored. Even though historical findings in the ruins as written by Jacques Ignace Hittorff show that the Greek architecture of Empedocles in Selinus Sicily is believed to be white, it turns out that this is not so, but brightly colored polychromatic (Ellingham, 2019; Armstrong 2016:501). This article discusses how the placement of architectural colors is not only as a building decoration, but as an element inherent in the unity of design, from the past to the present.

In the past, artists and scientists tended to think that color was the result of light and dark alone. The size of the scale of darkness makes one color different from another. Red is pure white light that gets the least amount of dark effect. The darkest scale produces black, while the smaller one produces blue. The theory of light and darkness has also been written by Greek philosophers since the Middle Ages, such as Plato (1892:559) in *Timaeus* (390 BC), or his student Aristotle (384-322 BC) that all colors are produced by mixing black and white (Aristotle 1548) in *De Coloribus* (330 BC).

Newton's discovery tacitly raised the doubts of other colorists, but they had no good reason to reject it. Goethe, for example, doubted Newton's theory and chose to follow Aristotle's idea that color represents a mixture of light and dark. White is a representation of light and black is equivalent to darkness (Von Goethe 1970:6-7; Duck & Petry 2016: viii). Although Goethe was considered incapable of understanding Newton's experiments, Goethe's color theory was very well received in several artistic circles (Barsan & Merticariu 2016; Treisman 1996). Artists, for example, assume that the colors of Newton's spectrum are not found in nature. They also state that color is not just a matter of science, but also a psychological problem. They carried out various experiments by mixing pigment colors to produce natural colors.

In 1856 William Perkin discovered the first artificial color of coal tar waste. This bluish purple color is called mauve (France) which soon became a trendsetter (Garfield 2018:8). Furthermore, the industrial revolution in the field of color also made scientists carry out various experiments to produce artificial colors that nature could not provide. Various kinds of color pigments can be mass produced at an economical cost. This industrial revolution also had a major influence on the development of paint.

Paint that initially functions as a surface coating, for example, protects iron and steel from rusting and corrosion increases as an aesthetic function (Lambourne 1999:2-4), with a variety of color choices according to user preferences. In 1982 the paint company Benjamin Moore introduced a color matching system. The choice of product colors that were originally determined by the manufacturer and distributed to agents en masse, can now be made by anyone (Benjamin Moore 2021). Each user can design the color mix as desired at an individual level.

2. Method

The research uses a historical approach with data interpretation methods. The process begins with collecting literature data related to the topic of architectural color research and the color industrial revolution. The data collected is digital data in the form of documents in the form of text and images. The data comes from historical sources and traces that have been validated and considered valid. Data verification using external and internal criticism methods. The collected data is then grouped by taxonomy. Each data in a group is analyzed with each other. Furthermore, it is synthesized by analyzing data from other groups to obtain conclusions that will be presented in the form of historiography.

3. Results

3.1. Color Morality and Color Cards

Although the industrial revolution in the field of color could produce a variety of desired colors, mass production also resulted in color uniformity including black, white, gray and brown. Brightly colored products like red, orange or yellow are still hard to find. Until the late 19th century there was a view that bright colors aimed at attracting attention were considered inappropriate and should be used sparingly. Colors like gray or light brown are considered to be more dignified and decent, and are therefore mass-produced.

Metaphorically, for example, white is perceived as something pure (Elliot 2015). This statement contradicts the fact that the subjectivity of symbolic meaning is not universal but contextual. In France red is a symbol of nobility (De Saint-Amand 1900:282). This color is also Louis XIV's clothing to counter Spain's black color (McCabe 2015:123; McCabe 2008:238). Louis XIV also wore red heels (Pastoureau 2017:133 and died in the red and golden bedroom in the heart of the palace of Versailles (Bernier 2018:1).

Pastoureau (2020) states that positioning, colors symbolically and associating them with moral status represents what Bourdieu referred to in 1979 as a game of distinction. A person's status is shown through the difference between moral and immoral classes in society. In the social world, the system of power relations and symbolic systems play a different "taste" as the basis of social judgment. According to Bourdieu, the dominant classes impose this domination not by owning wealth and the means of production, but by imposing the legitimacy of their own tastes and values (Bourdieu 2013; Bourdieu 1977).

Color uniformity is considered an industry's failure to produce bright colors such as red, blue or green. Industries must abandon low-cost mass products and serve customer segmentation according to their respective social circles (Pastoureau 2020:45-49). Attractive colors are seasonal and not timeless like grays and browns that can be adapted to all seasons. Therefore, if the industry mass-produces bright colors, there is a risk that the product has not been absorbed by the market while the color season is over.

The business community realizes that the color industry is a new business that has a risk of loss. Mistakes in determining colors in production have a great potential for failure to sell the products offered. In 1930, Holbrook Jackson, a journalist and writer, spoke about the importance of color determination and color forecasts (Jackson 1930). The UK established a color management authority called the British Color Council. Jackson introduced a practical knowledge instrument in the form of The Shade Card for textile product color users.

Textile manufacturers, garment manufacturers and retailers need information about colors that are likely to be trending in the coming season. This information is important so that they can prepare requests. The Shade Cards are issued by the Chambre Syndicale des Teinuriers in Lyon France, Saint-Étienne France, the Société de

Teinture & d'Apprêt Basel, Switzerland. (Blaszczyk 2018:35-37). As a result of World War I, America, which had difficulty getting supplies of dyeing and textiles from Europe, finally formed color forecasting by The Color Association of the United States and the Color Council and Trend Union (Bleicher 2012:34-36).

The trend of the preferred color has been planned and constructed by color forecasters and color designers 18-24 months before the color becomes trendy. They evaluate and analyze the consumer's preferred color possibilities for the next two-year sales season, allowing sufficient time to match the industry's production schedule. These experts conduct research into people of various age groups. They throw in various color ideas and ask respondents to choose them. All industries whose products are related to color, such as fiber/yarn, textile, leather, plastic, paint, dye, etc., will use the services of color planners and forecasters, so that their products conform to color trends when their products are marketed.

Research in color psychology has shown that 62-90% of consumer product ratings are based on color alone (Moir 2011). Even though technological developments allow individual users to choose colors according to their wishes, color trends constructed by color forecasters and color designers always pay attention to consumer behavior which is influenced by the situation and world conditions that occur at that time, which like or dislike will affect the way we express ourselves. This trend is getting wider when information systems no longer recognize distance and time.

History records that color trends are strongly influenced by events related to: (1) Social, political and economic issues; (2) The world and stage of entertainment; (3) The world of art; and (4) seasonal cyclical patterns (Blaszczyk 2012). When social, political and economic conditions deteriorate, people tend to use dim colors. But these colors can be alternated with bright colors to represent hope and optimism.

When the 2008 Olympics were decided to be held in China, the color trend immediately towards red which is the symbolic color of China. Favorite color of art figures. Revitalizing Miami Beach by Leonard Horowitz draws on the historical colors of art Deco artists such as Picasso and Gerrit Rietveld (Miami Design Preservation League 2021; Curtis 2013). The color season cycle repeats about once every 20 years. But with the development of information technology, the cycle of this season has become shorter.

3.2. Color Theme and Fassade Revitalization

Until 1840, exterior color schemes were difficult to find in America. The color scheme became an important document when a landscape architect Andrew Jackson Downing (1815-1852) made it for the book *Cottage Residences* at 1842. As a polemicist, Downing did not like white wooden buildings, and wanted to change the perception of architecture observers. Downing created a palette of grays, yellows, tans, and pinks.

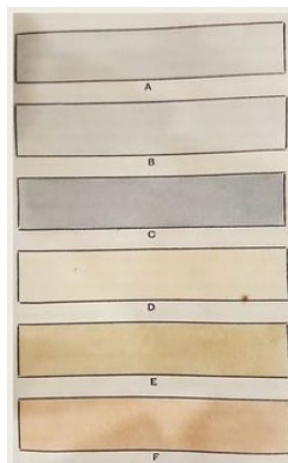


Figure 1. Downing Color Scheme

Source: Downing (1842)

In 1880 Downing's ideas were developed in the form of a multi-color paint scheme and standard ready-mixed paint and color printing by architects. See Figure 1. This color scheme then, became an ideal promotion for the

paint industry after the Civil War compared to the unpredictable tones of handmade paint. This standardized color then went hand-in-hand, very useful for buyers in the polychromatic era in the late Victorian era in the early 19th century (Bock 1996:52; Sherwin Williams n.d.; Downing 1842:25).

In 1918, Le Corbusier stated that form preceded the idea of color and that color was only an accessory of form. He considered that form is colorless and color is not independent because it follows form and not vice versa. In 1925, Le Corbusier published *L'art décoratif d'aujourd'hui* (The Decorative Art of Today) which rejected the style of the 1925 Exposition of Decorative Arts which was based on Chinese, Japanese, Indian, and Persian art which was rich in ornamentation, and color. For him, modern decorative art lacks decoration and art Deco is a form of revival of Louis Philippe and Louis XVI moderne (Journel 2015; Corbusier 1987).

Contrary to earlier views, in 1926 Corbusier designed a workers' housing complex, Cité Frugès, in Pessac. Unlike the previous villas which had white exterior walls, but for Cité Frugès, he added brown, yellow and jade green panels. In 1929-1933 Corbusier designed 46 Swiss Pavilion student dormitories at the Cité Universitaire Paris. He designed the main salon decorated with black-and-white nature photo montages. In 1931 Le Corbusier stated that humans need color to live. Color is an element as important as water and fire (Calvano 2006:354).

In 1931 Corbusier created 13 color schemes using 43 color palettes. In 1948, Corbusier replaced the decorations of the Swiss Pavilion with colorful murals that he painted himself. In 1959, he created a polychromatic color scheme using a 63 color palette (Les Couleurs 2021). The Corbusier 1931-1959 color scheme was originally created by the wallpaper company Salubra. In 1997 this color scheme was produced by the Swiss paint company KT Color Co.

The works exhibited at the 1925 Exposition of Decorative Arts are generally inspired by the anthropologist's discovery of Ancient Mexico (Nuttall 1886) and the 1922 discovery of the intact tomb of King of Pharaoh Tutankhamun by British archaeologist Howard Carter (Newberry 1939), European cubist artworks such as Picasso (Klein 2021), pre-Columbian and Caribbean culture (Pool 2018), as well as the emergence of new materials such as chrome plating, stainless steel, and plastic. This exhibition influences the rich style of American architectural luxury with bright and strong colors known as the art Deco style.

In architectural art, the art Deco style is demonstrated by the Chrysler Building (1928-1930) designed by William Van Alen. The interior of the luxurious lobby with yellow and orange nuances is designed to follow the rhythm of the greatness of the Egyptian pyramids. Elevator door with lotus motif ornament from brass and wood shows high quality taste (Knowles 2014:115-116). The art Deco style which was influenced by the Dutch artists, known as the neoplasticism flow. The distinguishing feature of De Stijl's artist is the use of horizontal and vertical lines with primary colors and achromatic colors of white, black, and gray. They put color only on continuous planes without cuts, consistently uses this style in the architectural design of the Schröder House designed by Gerrit Rietveld (Friedman 2007:65).



Figure 2. Cherokee red at Taliesin West, Scottsdale/Phoenix Arizona

Source: Wikipedia (2021)

In 1936, Frank Lloyd Wright made an organic color scheme for Fallingwater. In collaboration with Martin-Senour Paints, Wright created his favorite color palette called Cherokee Red. This red color evolved from a deep, earthy-brown red, to a dusty orange-tinged, clay red. Wright saw Cherokee red as the base color of the earth in homage to the Native Americans who made pots out of red earth. In Fallingwater, for example, 'Cherokee red' is only for building materials made of iron (Frank Lloyd Wright Foundation 2017; Old House Magazine 2002:32). This color scheme with Cherokee appeared in other Wright designs such as Taliesin West. See Figure 2.

In the 1970s, colored paint was used to revitalize old cities in Europe. This activity is a collaboration between architects, artists and local residents. The color scheme of the city of Turin (Italy) was designed by architect Giovanni Brino based on the original colors of the city's history and traditions. This model was considered very successful in attracting tourists and was soon followed by other old cities such as Tirana (Italy) by artist Edi Rama, and Rio de Janeiro by Jeroen Koolhaas and Dre Urhahn (Prisco 2013), Querétaro City (Mexico) by artist Boa Mistura, or Girona (Italy) by architect Josep Fuste Comalada (Espelt and Benito 2004), and Gamcheon (South Korea) by Jin Young-Sup (Elisa 2019) (Lee 2014). This color approach in urban space is offered to reconcile the desire for conservation and the continuity of the vitality of old city spaces (Boeri 2017).

In 2006, Koolhaas and Urhahn started research to paint the facades of slum areas in Rio de Janeiro in the series Favela Painting. They chose to paint three houses right in the middle of Vila Cruzeiro. The project, which was donated by the Firmeza Foundation (Netherlands) and in collaboration with the paint company Coral-Akzo Nobel, aims for artists to collaborate with local youth to create community artworks. The Boy With Kite themed mural is a symbol for the children of the *favela*. This initial mural was continued by residents who painted cement hillsides with the title Fish Leaping in a River (Darlington 2010). In its development the Favela Painting project did not last long because the paint faded. This makes maintenance difficult. Furthermore, the community replaced the paint with locally available sustainable materials, namely lime stucco and pigment tiles in the form of a mosaic (Favela Painting 2018).



Figure 3. Mural painting with the theme Boy With Kite on the facade in the middle of the slum area of Vila Cruzeiro

Source: Koolhaas (2007)

The revitalization model with this approach is also carried out in Indonesia, such as in Jodipan village, Malang. This program is supported in collaboration with corporate social responsibility (CSR) paint industry companies with participatory-based planning and carried out consistently for the purpose of improving the local community's economy (Wulandari 2017). While the revitalization of other old cities is generally carried out based on local community culture by architects and artists, Jodipan is fully planned with the concept of creating a place branding based on social marketing communication media practitioners. Through the concept of place branding using social media, Jodipan was introduced as a worthy tourist destination to visit (Sulistyaningsih, et al. 2021).

These descriptions show that the choice of color in the past was determined by the architect and the user took advantage of the palettes and color schemes that were not only a favorite of famous architects but also by the current trend situation. The choice of architectural color is part of the style of consumer behavior towards fashion. Industry manufactures and markets products based on architects' color designs.

On the other hand, there is a phenomenon of architects making color schemes by involving the participation of

the local community. This shows that the determination of color in architecture is also influenced by the development paradigm that developed in the 1970s, where the community participated and was involved in participatory development. The goal is for local communities to be involved in the design and implementation of development projects. With active participation, it is hoped that the projects initiated will be sustainable and bring benefits to local communities (Cornwall 2002; Cornwall and Coelho 2007).

4. Discussion

The history of the development of the science of color, which was originally the area of expertise of artists and physicists, has attracted the attention of many disciplines. The industrial revolution opened up opportunities for color users not to rely on natural pigments because the industry could create synthetic colors according to the user's wishes. Therefore, the choice of color palettes and schemes no longer depends on the color products provided by the industry but can be done by individual users through the application of a color mixing system.

The freedom of choice color is recognized by the business community regarding color as something dangerous because foam causes the failure of the production offered. This encourages business people to control the freedom of color choice to be limited which is marketed as a color trend for certain seasons. This policy involves not only artists and architects as trendsetters, but also media practitioners such as journalists and writers. However, the architects also realized that the trend of the paradigm of active community participation could not be avoided. Every community has the right to choose what is considered good for their sustainable future, including improving the quality of their environment through the use of color.

References

- Aguilonius, F. 1613. *Opticorum Libri Sex-Philosophis iuxta ac Mathematicas utiles*. Antwerp: Plantin.
- Aristotle. 1548. *De Coloribus Libellus*. Florentiae : Ex officina Laurentii Torrentini.
- Armstrong, Christopher Drew. 2016. "French Architectural Thought and the Idea of Greece." In *A Companion to Greek Architecture*, edited by Margaret M. Miles , 487-508. Chichester: John Wiley & Sons Inc.
- Barsan, Victor, and Andrei Merticariu. 2016. "Goethe's Theory of Colors Between the Ancient Philosophy, Middle Ages Occultism and Modern Science." *Cogent Arts & Humanities* (Routledge) 3 (1): 1-29.
- Benjamin Moore**. 2021. *Our History*. Accessed August 31, 2021.
- Bernier , Olivier. 2018. *Louis XV*. Boston: New Word City.
- Blaszczyk, Regina Lee. 2012. *The Color Revolution*. CambridgeThe MIT Press.
- Blaszczyk, Regina Lee. 2018. "The Rise of Color Forecasting in the United States and Great Britain." In *The Fashion Forecasters - A Hidden History of Color and Trend Prediction*, edited by Regina Lee Blaszczyk and Ben Wubs. London: Bloomsbury Publishing.
- Bleicher, Steven. 2012. *Contemporary Color Theory & Use*. New York: Delmar.
- Bock, Gordon. 1996. *Colorful Issues in Choosing Exterior Paint*. Vol. 24, in *Old-House Journal, Magazine*, 50-55. Denver: Active Interest Media Home Buyer Publications.
- Boeri, Christina. 2017. "Color Loci Placemaking: The Urban Color Between Needs of Continuity and Renewal." *Color Research & Application* (Wiley & Sons) 42: 641-649.
- Bourdieu, Pierre. 2013. *Distinction: A Social Critique of the Judgement of Taste*. Abingdon: Routledge.
- Bourdieu,, Pierre. 1977. *Outline of a Theory of Practice*. Translated by Richard Nice. Cambridge: Cambridge University Press.
- Calvano, Jose Luis. 2006. "The Research on Color in Architecture: Brief History, Current Developments, and Possible Future." *Color Research & Application* 31 (4): 350-363.
- Corbusier, Le. 1987. *The Decorative Art of Today*. Massachusetts: MIT Press.
- Cornwall, Andrea, and Vera Schattan P. Coelho. 2007. "Spaces for Change? The Politics of Participation in New Democratic Arenas." In *Spaces for Change? The Politics of Participation in New Democratic Arenas*, edited by Andrea Cornwall and Vera Schattan P. Coelho, 1-32. London: Zed Book.

- Cornwall, Andrea. 2002. *Beneficiary, Consumer, Citizen: Perspectives on Participation for Poverty Reduction - Sida Studies No. 2*. Sida Studies.
- Curtis, James R. 2013. "Art Deco Architecture in Miami Beach." *Journal of Cultural Geography* (Routledge) 20 (46): 53-63.
- Darlington, Shasta. 2010. *Rio Slum Transformed into Canvas Bursting With Color*. November 17. Accessed August 31, 2021. <http://edition.cnn.com/2010/WORLD/americas/11/17/brazil.beautiful.favela/index.html>
- De Saint-Amand, mber. 1900. *Women of Versailles: The Court of Louis XIV*. Translated by Gilbert Elizabeth Martin. New York: Charles Scribner's Sons.
- Diane, Tracy, and Tom Cassidy. 2009. *Colour Forecasting*. Oxford: Blackwell Publishing Ltd.
- Downing , Andrew Jackson. 1842. *Cottage Residences Or, A Series of Designs for Rural Cottages and Cottage Villas, and Their Gardens and Grounds. Adapted to North America*. New York: Wiley and Outnam.
- Duck, Michael John, and Michael Petry. 2016. *Goethe's "Exposure Of Newton's Theory": A Polemic On Newton's Theory Of Light And Colour*. London: Imperial College Press.
- Elisa. 2019. *Membedah Kampung Instagrammable Gamcheon*. November 26. Accessed August 31, 2021. <https://rujak.org/membedah-kampung-instagrammable/>.
- Ellingham,, Ian. 2019. "Why Not Colour In Architecture?" *The Right Angle Journal*, (Naylor) 2 (4).
- Elliot, Andrew J. 2015. *Frontiers in Psychology* 6: 1-8.
- Espelt, Nuria Gali, and Antonio Donaire Benito. 2004. "The Social Construction of The Image of Girona: A Methodological Approach." *Tourism Management* (Elsevier) 26 (5).
- Frank Lloyd Wright Foundation. 2017. *The Whirling Arrow*. Accessed September 30, 2021. <https://franklloydwright.org/about-us/>.
- Friedman, Alice T. 2007. *Women and the Making of the Modern House: A Social and Architectural History*. New Haven: Yale University Press.
- Garfield , Simon. 2018. *Mauve: How One Man Invented a Colour that Changed the World*. Edin burgh: Canongate Books Ltd.
- Gasparini, Katia. 2021. "The Colour of Emerging Textile for Urban Regeneration: The Role of Technology Between Experimentations and Craftsmanship." *Color Research & Application* (John Wiley & Sons) 538-545.
- Jackson, Holbrook. 1930. "Colour Determination in The Fashion Trades." *Journal of the Royal Society of Arts* (RSA The Royal Society for Arts, Manufactures and Commerce) 78 (4034): 492-513.
- Journel, Guillemette Morel. 2015. *Le Corbusier Construire la vie Moderne*. Paris: Editions du Patrimoine.
- Ke-Run, Li, Yang Ya-Qian, and Zheng Zhi-Qiang. 2019. "Research on Color Harmony of Building Façades." *Color Research & Application* (John Wiley and Sons) 45 (1): 105-119.
- Klein, Dan. 2021. *What is Art Deco? From the Archives*. Accessed August 31, 2021. <https://www.artdeco.org/archives>.
- Knowles , Eric. 2014. *Art Deco*. U.K.: Shire Publications.
- Koolhaas, Jeroen. 2007. *Boy With Kite*. August 31. Accessed 2021. <https://jeroenkoolhaas.com/2007-BOY-WITH-KITE>.
- Lambourne, R. 1999. "Paint Composition and Applications — A General Introduction." In *Paint and Surface Coatings - Theory and Practice*, edited by R. Lambourne and T. A. Striven, 1-18. Cambridge: Woodhead Publishing Ltd.
- Lee, Yeun Sook. 2014. "A Local Asset Based Regeneration Process of Gamcheon Culture Village Busan." *Korea Institute of Ecological Architecture and Environment Journal* 14 (3): 111-120.
- Les Couleurs. 2021. *Les Couleurs*. Accessed August 31, 2021. <https://www.lescouleurs.ch/en/the-colours/colour-keyboards/colour-keyboard-1931>.
- McCabe, Ina Baghdiantz. 2008. *Orientalism in Early Modern France: Eurasian Trade, Exoticism, and the Abcien Regime*. Oxford: Berg.
- McCabe, Ina Badiantz. 2015. *A History of Global Consumption: 1500 - 1800*. London: Routledge.

- Miami Design Preservation League. 2021. *From the Archive – The Color of Leonard Horowitz's Life* Accessed August 31, 2021. <https://mdpl.org/archives/2021/07/the-colors-of-leonard-horowitzs-life/> .
- Moir, Diane E. 2011. "Trademark Protection of Color Alone: How and When Does a Color Develop Secondary Meaning and Why Color Marks Can Never Be Inherently Distinctive." *Touro Law Review* (Touro Law Center) 27 (2).
- Newberry, P. E. 1939. "Howard Carter." *The Journal of Egyptian Archaeology* (Egypt Exploration Society) 25 (1): 67-69.
- Newton, Isaac. 1730. *Opticks: Or a Treatise of the Reflections, Refractions, Inflections & Colours of Light*. London: William Innys.
- Nuttall, Zelia. 1886. "The Terracotta Heads of Teotihuacan." *The American Journal of Archaeology and of the History of the Fine Arts*. (The American Journal of Archaeology and of the History of the Fine Arts) 2: 157-178.
- Old House Magazine. 2002. *Old House Magazine*. Vol. 30 (5). Active Interest Media, Inc.
- Orna, Mary Virginia. 2013. "Introduction: Colors, Natural and Synthetic, in the Ancient World." In *Springer Briefs in Molecular Science: History of Chemistry*, edited by Virginia Mary Orna, 1-10. New York: Springer.
- Pastoureau , Michel. 2020. *The Colours of Our Memories*. Translated by Janet Lloyd. London: Polity Press.
- Pastoureau, Michel. 2017. *Red The History of a Color*. Princeton: Princeton University Press.
- Pavela Painting. 2018. *Pavela Painting*. Accessed August 31, 2021. <https://favelapainting.com/PROJECTS>.
- Plato. 1892. *Republic. Timaeus. Critias - The Dialogues of Plato*. Translated by B. Jowett. Vol. II. New York: Charles Scribner's Sons.
- Pool, Rachel Frances. 2018. "The Misconceived Image in Society of American Art Deco Architecture and Design." *The International Journal of the Image* (Common Ground Research Networks) 9 (2): 37-53.
- Prisco, Joanna. 2013. *Expansive Mural Makeover*. November 2. Accessed August 31, 2021. <https://abcnews.go.com/Lifestyle/artists-aim-rebrand-rio-slums-expansive-mural-makeover/story?id=20740743>.
- Sherwin Williams. n.d. *Heritage Colors, Authentic Exterior Colors for American Buildings 1820/1920*. Cleveland: The Sherwin Williams Company.
- Sulistyaningsih, Tri, Jainuri Jainuri , Salahudin Salahudin, Hazel Dapat Jovita, and Achmad Nurmandi. 2021. "Can Combined Marketing and Planning-oriented of Community-based Social Marketing (CBSM) Project Successfully Transform the Slum Area to Tourism Village? A Case Study of the Jodipan Colorful Urban Village, Malang, Indonesia." *Journal of Nonprofit & Public Sector Marketing* (Routledge, Taylor & Francis Group).
- Treisman, Michel. 1996. "Why Goethe Rejected Newton's Theory of Light." *Perception* (Sage Publications) 25: 1219-1222.
- Von Castell, Christoph, Heiko Hecht, and Daniel Oberfeld. 2018. "Bright Paint Makes Interior-Space Surfaces Appear Farther Away." *plos One* (Public Library of Science) 13 (9): 1-15.
- Von Goethe, Johann Wolfgang. 1970. Cambridge: MIT Press.
- Wikipedia. 2021. *Taliesin West*. June 26. Accessed August 31, 2021. https://en.wikipedia.org/wiki/Taliesin_West.
- Wulandari, Prisca Kiki. 2017. "Inovasi Pemuda Dalam Mendukung Ketahanan Ekonomi Keluarga (Studi Di Kampung Warna-Warni Kelurahan Jodipan, Kecamatan Blimbing, Kota Malang)." *Jurnal Ketahanan Nasional* 23 (3): 300-319.



Journal of Social and Political Sciences

Martosenjoyo, Triyatni. (2021), Color in Architecture: Before and After Industry Revolution. In: *Journal of Social and Political Sciences*, Vol.4, No.4, 87-94.

ISSN 2615-3718

DOI: 10.31014/aior.1991.04.04.320

The online version of this article can be found at:
<https://www.asianinstituteofresearch.org/>

Published by:
The Asian Institute of Research

The *Journal of Social and Political Sciences* is an Open Access publication. It may be read, copied, and distributed free of charge according to the conditions of the Creative Commons Attribution 4.0 International license.

The Asian Institute of Research *Social and Political Sciences* is a peer-reviewed International Journal. The journal covers scholarly articles in the fields of Social and Political Sciences, which include, but are not limited to, Anthropology, Government Studies, Political Sciences, Sociology, International Relations, Public Administration, History, Philosophy, Arts, Education, Linguistics, and Cultural Studies. As the journal is Open Access, it ensures high visibility and the increase of citations for all research articles published. The *Journal of Social and Political Sciences* aims to facilitate scholarly work on recent theoretical and practical aspects of Social and Political Sciences.



ASIAN INSTITUTE OF RESEARCH
Connecting Scholars Worldwide



Color in Architecture: Before and After Industry Revolution

Triyatni Martosenjoyo¹

¹ Department of Architecture, Faculty of Engineering, Hasanuddin University. Email: triyatni@gmail.com

Abstract

Color as a visual element cannot be separated from architectural design. The development of knowledge about color involved artists and scientists. In the past, color was always associated with the activities of artists as creators of decorative works using pigments produced by nature. Artists and scientists assume that color occurs due to the influence of light and dark which is homogeneous. This was later refuted by Newton's findings that color is produced by heterogeneous light. Different colors are a result of different refractive indexes. The discovery of artificial colors by Perkin encouraged the industry to create colors not only to produce colors that exist in nature, but also according to the wishes of the user as an individual. The opportunity to use colors according to the needs of individual users then encourages businesses to control colors so that the industry does not suffer losses if the colors of the products they produce do not sell well in the market. They work closely with color forecasters and color designers to determine color trends according to the interests of producers through color cards. This condition is followed by architects who create color schemes based on their own favorite color palette. This article finds out how the development of science positions color in architectural works? The research was conducted with a historical approach and data interpretation methods through a literature review.

Keywords: Color, Color Forecast, Color Card, Color Scheme, Architecture

1. Introduction

Color is a visual experience that greatly influences human life. Colors have now entered all activities of human life following the development of science and technology. In the past, color was closely related to the activities of artists. To create decorative art in their cave dwellings, in cemeteries, or on their bodies, they use colors produced by nature or synthetically, for example from ochres or iron earths for red, orange, yellow, brown, and gold. The black color comes from charcoal, and the white color comes from animal bones. In the findings of paintings in caves, it appears that the artist used natural and synthetic colors to produce various palettes of hues and shades. But the colors of interest are blue, red and yellow (Orna 2013:2-9; Lambourne 1999:1).

Prior to the 1800s, research on color was very limited and tended to be speculative, physical, psychological, cultural, psychological, artistic, and perhaps even spiritual. Research on color is generally limited to topics related to harmony and color perception, as conducted by Von Castell, Hecht and Oberfeld (2018), Ke-Run, Ya-Qian and Zhi-Qiang (2019), Fontoura and Menu (2021), and color technology as is done by Gasparini (2021). Researchers

may not be interested in discussing the building exterior color as an important aspect for the practical reason that most building exteriors are not explicitly colored. Even though historical findings in the ruins as written by Jacques Ignace Hittorff show that the Greek architecture of Empedocles in Selinus Sicily is believed to be white, it turns out that this is not so, but brightly colored polychromatic (Ellingham 2019; Armstrong 2016:501). This article discusses how the placement of architectural colors is not only as a building decoration, but as an element inherent in the unity of design, from the past to the present.

In the past, artists and scientists tended to think that color was the result of light and dark alone. The size of the scale of darkness makes one color different from another. Red is pure white light that gets the least amount of dark effect. The darkest scale produces black, while the smaller one produces blue. The theory of light and darkness has also been written by Greek philosophers since the Middle Ages, such as Plato (1892:559) in *Timaeus* (390 BC), or his student Aristotle (384-322 BC) that all colors are produced by mixing black and white (Aristotle 1548) in *De Coloribus* (330 BC).

Newton's discovery tacitly raised the doubts of other colorists, but they had no good reason to reject it. Goethe, for example, doubted Newton's theory and chose to follow Aristotle's idea that color represents a mixture of light and dark. White is a representation of light and black is equivalent to darkness (Von Goethe 1970:6-7; Duck & Petry 2016: viii). Although Goethe was considered incapable of understanding Newton's experiments, Goethe's color theory was very well received in several artistic circles (Barsan & Merticariu 2016; Treisman 1996). Artists, for example, assume that the colors of Newton's spectrum are not found in nature. They also state that color is not just a matter of science, but also a psychological problem. They carried out various experiments by mixing pigment colors to produce natural colors.

In 1856 William Perkin discovered the first artificial color of coal tar waste. This bluish purple color is called mauve (France) which soon became a trendsetter (Garfield 2018:8). Furthermore, the industrial revolution in the field of color also made scientists carry out various experiments to produce artificial colors that nature could not provide. Various kinds of color pigments can be mass-produced at an economical cost. This industrial revolution also had a major influence on the development of paint.

Paint that initially functions as a surface coating, for example, protects iron and steel from rusting and corrosion increases as an aesthetic function (Lambourne 1999:2-4), with a variety of color choices according to user preferences. In 1982 the paint company Benjamin Moore introduced a color matching system. The choice of product colors that were originally determined by the manufacturer and distributed to agents en masse, can now be made by anyone (Benjamin Moore 2021). Each user can design the color mix as desired at an individual level.

2. Method

The research uses a historical approach with data interpretation methods. The process begins with collecting literature data related to the topic of architectural color research and the color industrial revolution. The data collected is digital data in the form of documents in the form of text and images. The data comes from historical sources and traces that have been validated and considered valid. Data verification using external and internal criticism methods. The collected data is then grouped by taxonomy. Each data in a group is analyzed with each other. Furthermore, it is synthesized by analyzing data from other groups to obtain conclusions that will be presented in the form of historiography.

3. Results

3.1. Color Morality and Color Cards

Although the industrial revolution in the field of color could produce a variety of desired colors, mass production also resulted in color uniformity including black, white, gray, and brown. Brightly colored products like red, orange, or yellow are still hard to find. Until the late 19th century there was a view that bright colors aimed at

attracting attention were considered inappropriate and should be used sparingly. Colors like gray or light brown are considered to be more dignified and decent, and are therefore mass-produced.

Metaphorically, for example, white is perceived as something pure (Elliot 2015). This statement contradicts the fact that the subjectivity of symbolic meaning is not universal but contextual. In France red is a symbol of nobility (De Saint-Amand 1900:282). This color is also Louis XIV's clothing to counter Spain's black color (McCabe 2015:123; McCabe 2008:238). Louis XIV also wore red heels (Pastoureau 2017:133 and died in the red and golden bedroom in the heart of the palace of Versailles (Bernier 2018:1).

Pastoureau (2020) states that positioning, colors symbolically and associating them with moral status represents what Bourdieu referred to in 1979 as a game of distinction. A person's status is shown through the difference between moral and immoral classes in society. In the social world, the system of power relations and symbolic systems play a different 'taste' as the basis of social judgment. According to Bourdieu, the dominant classes impose this domination not by owning wealth and the means of production, but by imposing the legitimacy of their own tastes and values (Bourdieu 2013; Bourdieu 1977).

Color uniformity is considered an industry's failure to produce bright colors such as red, blue or green. Industries must abandon low-cost mass products and serve customer segmentation according to their respective social circles (Pastoureau 2020:45-49). Attractive colors are seasonal and not timeless like grays and browns that can be adapted to all seasons. Therefore, if the industry mass-produces bright colors, there is a risk that the product has not been absorbed by the market while the color season is over.

The business community realizes that the color industry is a new business that has a risk of loss. Mistakes in determining colors in production have a great potential for failure to sell the products offered. In 1930, Holbrook Jackson, a journalist and writer, spoke about the importance of color determination and color forecasts (Jackson 1930). The UK established a color management authority called the British Color Council. Jackson introduced a practical knowledge instrument in the form of The Shade Card for textile product color users.

Textile manufacturers, garment manufacturers and retailers need information about colors that are likely to be trending in the coming season. This information is important so that they can prepare requests. The Shade Cards are issued by the *Chambre Syndicale des Teinturiers* in Lyon France, Saint-Étienne France, the *Société de Teinture and d'Apprêt* Basel, Switzerland. (Błaszcyk 2018:35-37). As a result of World War I, America, which had difficulty getting supplies of dyeing and textiles from Europe, finally formed color forecasting by The Color Association of the United States and the Color Council and Trend Union (Bleicher 2012:34-36).

The trend of the preferred color has been planned and constructed by color forecasters and color designers 18-24 months before the color becomes trendy. They evaluate and analyze the consumer's preferred color possibilities for the next two-year sales season, allowing sufficient time to match the industry's production schedule. These experts conduct research into people of various age groups. They throw in various color ideas and ask respondents to choose them. All industries whose products are related to color, such as fiber/yarn, textile, leather, plastic, paint, dye, etc., will use the services of color planners and forecasters, so that their products conform to color trends when their products are marketed.

Research in color psychology has shown that 62-90% of consumer product ratings are based on color alone (Moir 2011). Even though technological developments allow individual users to choose colors according to their wishes, color trends constructed by color forecasters and color designers always pay attention to consumer behavior which is influenced by the situation and world conditions that occur at that time, which like or dislike will affect the way we express ourselves. This trend is getting wider when information systems no longer recognize distance and time. History records that color trends are strongly influenced by events related to: (1) Social, political and economic issues; (2) The world and stage of entertainment; (3) The world of art; and (4) seasonal cyclical patterns (Błaszcyk 2012). When social, political and economic conditions deteriorate, people tend to use dim colors. But these colors can be alternated with bright colors to represent hope and optimism.

When the 2008 Olympics were decided to be held in China, the color trend immediately towards red which is the symbolic color of China. Favorite color of art figures. Revitalizing Miami Beach by Leonard Horowitz draws on the historical colors of art Deco artists such as Picasso and Gerrit Rietveld (Miami Design Preservation League 2021; Curtis 2013). The color season cycle repeats about once every 20 years. But with the development of information technology, the cycle of this season has become shorter.

3.2. Color Theme and Fassade Revitalization

Until 1840, exterior color schemes were difficult to find in America. The color scheme became an important document when a landscape architect Andrew Jackson Downing (1815-1852) made it for the book *Cottage Residences* in 1842. As a polemicist, Downing did not like white wooden buildings, and wanted to change the perception of architecture observers. Downing created a palette of grays, yellows, tans, and pinks.

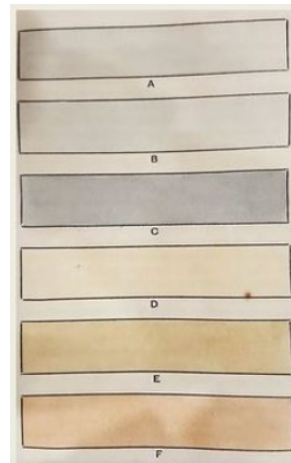


Figure 1: Downing Color Scheme
Source: Downing (1842)

In 1880, Downing's ideas were developed in the form of a multi-color paint scheme and standard ready-mixed paint and color printing by architects. See Figure 1. This color scheme then, became an ideal promotion for the paint industry after the Civil War compared to the unpredictable tones of handmade paint. This standardized color then went hand-in-hand, very useful for buyers in the polychromatic era in the late Victorian era in the early 19th century (Bock 1996:52; Sherwin Williams n.d.; Downing 1842:25).

In 1918, Le Corbusier stated that form preceded the idea of color and that color was only an accessory of form. He considered that form is colorless and color is not independent because it follows form and not vice versa. In 1925, Le Corbusier published *L'art decoratif d'aujourd'hui* (The Decorative Art of Today) which rejected the style of the 1925 Exposition of Decorative Arts which was based on Chinese, Japanese, Indian, and Persian art which was rich in ornamentation, and color. For him, modern decorative art lacks decoration and art Deco is a form of revival of Louis Philippe and Louis XVI moderne (Journel 2015; Corbusier 1987).

Contrary to earlier views, in 1926 Corbusier designed a workers' housing complex, Cité Frugès, in Pessac. Unlike the previous villas which had white exterior walls, but for Cité Frugès, he added brown, yellow and jade green panels. In 1929-1933 Corbusier designed 46 Swiss Pavilion student dormitories at the Cité Universitaire Paris. He designed the main salon decorated with black-and-white nature photo montages. In 1931 Le Corbusier stated that humans need color to live. Color is an element as important as water and fire (Calvano 2006:354).

In 1931, Corbusier created 13 color schemes using 43 color palettes. In 1948, Corbusier replaced the decorations of the Swiss Pavilion with colorful murals that he painted himself. In 1959, he created a polychromatic color scheme using a 63 color palettes (Les Couleurs 2021). The Corbusier 1931-1959 color scheme was originally created by the wallpaper company Salubra. In 1997 this color scheme was produced by the Swiss paint company KT Color Co.

The works exhibited at the 1925 Exposition of Decorative Arts are generally inspired by the anthropologist's discovery of Ancient Mexico (Nuttall 1886) and the 1922 discovery of the intact tomb of King of Pharaoh Tutankhamun by British archaeologist Howard Carter (Newberry 1939), European cubist artworks such as Picasso (Klein 2021), pre-Columbian and Caribbean culture (Pool 2018), as well as the emergence of new materials such as chrome plating, stainless steel, and plastic. This exhibition influences the rich style of American architectural luxury with bright and strong colors known as the art Deco style.

In architectural art, the art Deco style is demonstrated by the Chrysler Building (1928-1930) designed by William Van Alen. The interior of the luxurious lobby with yellow and orange nuances is designed to follow the rhythm of the greatness of the Egyptian pyramids. Elevator door with lotus motif ornament from brass and wood shows high quality taste (Knowles 2014:115-116). The art Deco style which was influenced by the Dutch artists, is known as the neoplasticism flow. The distinguishing feature of De Stijl's artist is the use of horizontal and vertical lines with primary colors and achromatic colors of white, black, and gray. They put color only on continuous planes without cuts. consistently uses this style in the architectural design of the Schröder House designed by Gerrit Rietveld (Friedman 2007:65).



Figure 2: Cherokee red at Taliesin West, Scottsdale/Phoenix Arizona

Source: Wikipedia (2021)

In 1936, Frank Lloyd Wright made an organic color scheme for Fallingwater. In collaboration with Martin-Senour Paints, Wright created his favorite color palette called Cherokee Red. This red color evolved from a deep, earthy-brown red, to a dusty orange-tinged, clay red. Wright saw Cherokee red as the base color of the earth in homage to the Native Americans who made pots out of red earth. In Fallingwater, for example, 'Cherokee red' is only for building materials made of iron (Frank Lloyd Wright Foundation 2017; Old House Magazine 2002:32). This color scheme with Cherokee red appeared in other Wright designs such as Taliesin West. See Figure 2.

In the 1970s, colored paint was used to revitalize old cities in Europe. This activity is a collaboration between architects, artists and local residents. The color scheme of the city of Turin (Italy) was designed by architect Giovanni Brino based on the original colors of the city's history and traditions. This model was considered very successful in attracting tourists and was soon followed by other old cities such as Tirana (Italy) by artist Edi Rama, and Rio de Janeiro by Jeroen Koolhaas and Dre Urhahn (Prisco 2013), Querétaro City (Mexico) by artist Boa Mistura, or Girona (Italy) by architect Josep Fuste Comalada (Espelt & Benito 2004), and Gamcheon (South Korea) by Jin Young-Sup (Elisa 2019; Lee 2014). This color approach in urban space is offered to reconcile the desire for conservation and the continuity of the vitality of old city spaces (Boeri 2017).

In 2006, Koolhaas and Urhahn started research to paint the facades of slum areas in Rio de Janeiro in the series Favela Painting. They chose to paint three houses right in the middle of Vila Cruzeiro. The project, which was donated by the Firmeza Foundation (Netherlands) and in collaboration with the paint company Coral-Akzo Nobel,

aims for artists to collaborate with local youth to create community artworks. The Boy With Kite themed mural is a symbol for the children of the *favela*. This initial mural was continued by residents who painted cement hillsides with the title Fish Leaping in a River (Darlington 2010). In its development, the Favela Painting project did not last long because the paint faded. This makes maintenance difficult. Furthermore, the community replaced the paint with locally available sustainable materials, namely lime stucco and pigment tiles in the form of a mosaic (Pavela Painting 2018).



Figure 3: Mural painting with the theme Boy With Kite on the facade in the middle of the slum area of Vila Cruzeiro

Source: Koolhaas (2007)

The revitalization model with this approach is also carried out in Indonesia, such as in Jodipan village, Malang. This program is supported in collaboration with corporate social responsibility (CSR) paint industry companies with participatory-based planning and carried out consistently for the purpose of improving the local community's economy (Wulandari 2017). While the revitalization of other old cities is generally carried out based on local community culture by architects and artists, Jodipan is fully planned with the concept of creating a place branding based on social marketing communication media practitioners. Through the concept of place branding using social media, Jodipan was introduced as a worthy tourist destination to visit (Sulistyaningsih, et al. 2021).

These descriptions show that the choice of color in the past was determined by the architect and the user took advantage of the palettes and color schemes that were not only a favorite of famous architects but also by the current trend situation. The choice of architectural color is part of the style of consumer behavior towards fashion. Industry manufactures and markets products based on architects' color designs. On the other hand, there is a phenomenon of architects making color schemes by involving the participation of the local community. This shows that the determination of color in architecture is also influenced by the development paradigm that developed in the 1970s, where the community participated and was involved in participatory development. The goal is for local communities to be involved in the design and implementation of development projects. With active participation, it is hoped that the projects initiated will be sustainable and bring benefits to local communities (Cornwall 2002; Cornwall & Coelho 2007).

4. Discussion

The history of the development of the science of color, which was originally the area of expertise of artists and physicists, has attracted the attention of many disciplines. The industrial revolution opened up opportunities for color users not to rely on natural pigments because the industry could create synthetic colors according to the user's wishes. Therefore, the choice of color palettes and schemes no longer depends on the color products provided by the industry but can be done by individual users through the application of a color mixing system.

The freedom of choice color is recognized by the business community regarding color as something dangerous because foam causes the failure of the production offered. This encourages business people to control the freedom of color choice to be limited which is marketed as a color trend for certain seasons. This policy involves not only artists and architects as trendsetters, but also media practitioners such as journalists and writers. However, the

architects also realized that the trend of the paradigm of active community participation could not be avoided. Every community has the right to choose what is considered good for their sustainable future, including improving the quality of their environment through the use of color.

References

- Aguilonius, F. 1613. *Opticorum Libri Sex-Philosophis iuxta ac Mathematicas utiles*. Antwerp: Plantin.
- Aristotle. 1548. *De Coloribus Libellus*. Florentiae : Ex officina Laurentii Torrentini.
- Armstrong, Christopher Drew. 2016. "French Architectural Thought and the Idea of Greece." In *A Companion to Greek Architecture*, edited by Margaret M. Miles , 487-508. Chichester: John Wiley & Sons Inc.
- Barsan, Victor, and Andrei Merticariu. 2016. "Goethe's Theory of Colors Between the Ancient Philosophy, Middle Ages Occultism and Modern Science." *Cogent Arts & Humanities* (Routledge) 3 (1): 1-29.
- Benjamin Moore. 2021. *Our History*. Accessed August 31, 2021.
- Bernier , Olivier. 2018. *Louis XV*. Boston: New Word City.
- Blaszczyk, Regina Lee. 2012. *The Color Revolution*. CambridgeThe MIT Press.
- Blaszczyk, Regina Lee. 2018. "The Rise of Color Forecasting in the United States and Great Britain." In *The Fashion Forecasters - A Hidden History of Color and Trend Prediction*, edited by Regina Lee Blaszczyk and Ben Wubs. London: Bloomsbury Publishing.
- Bleicher, Steven. 2012. *Contemporary Color Theory & Use*. New York: Delmar.
- Bock, Gordon. 1996. *Colorful Issues in Choosing Exterior Paint*. Vol. 24, in *Old-House Journal, Magazine*, 50-55. Denver: Active Interest Media Home Buyer Publications.
- Boeri, Christina. 2017. "Color Loci Placemaking: The Urban Color Between Needs of Continuity and Renewal." *Color Research & Application* (Wiley & Sons) 42: 641-649.
- Bourdieu, Pierre. 2013. *Distinction: A Social Critique of the Judgement of Taste*. Abingdon: Routledge.
- Bourdieu,, Pierre. 1977. *Outline of a Theory of Practice*. Translated by Richard Nice. Cambridge: Cambridge University Press.
- Calvano, Jose Luis. 2006. "The Research on Color in Architecture: Brief History, Current Developments, and Possible Future." *Color Research & Application* 31 (4): 350-363.
- Corbusier, Le. 1987. *The Decorative Art of Today*. Massachusetts: MIT Press.
- Cornwall, Andrea, and Vera Schattan P. Coelho. 2007. "Spaces for Change? The Politics of Participation in New Democratic Arenas." In *Spaces for Change? The Politics of Participation in New Democratic Arenas*, edited by Andrea Cornwall and Vera Schattan P. Coelho, 1-32. London: Zed Book.
- Cornwall, Andrea. 2002. *Beneficiary, Consumer, Citizen: Perspectives on Participation for Poverty Reduction - Sida Studies No. 2*. Sida Studies.
- Curtis, James R. 2013. "Art Deco Architecture in Miami Beach." *Journal of Cultural Geography* (Routledge) 20 (46): 53-63.
- Darlington, Shasta. 2010. *Rio Slum Transformed into Canvas Bursting With Color*. November 17. Accessed August 31, 2021. <http://edition.cnn.com/2010/WORLD/americas/11/17/brazil.beautiful.favela/index.html>
- De Saint-Amand, mber. 1900. *Women of Versailles: The Court of Louis XIV*. Translated by Gilbert Elizabeth Martin. New York: Charles Scribner's Sons.
- Diane, Tracy, and Tom Cassidy. 2009. *Colour Forecasting*. Oxford: Blackwell Publishing Ltd.
- Downing , Andrew Jackson. 1842. *Cottage Residences Or, A Series of Designs for Rural Cottages and Cottage Villas, and Their Gardens and Grounds. Adapted to North America*. New York: Wiley and Outnam.
- Duck, Michael John, and Michael Petry. 2016. *Goethe's "Exposure Of Newton's Theory": A Polemic On Newton's Theory Of Light And Colour*. London: Imperial College Press.
- Elisa. 2019. *Membedah Kampung Instagrammable Gamcheon*. November 26. Accessed August 31, 2021. <https://rujak.org/membedah-kampung-instagrammable/>.
- Ellingham,, Ian. 2019. "Why Not Colour In Architecture?" *The Right Angle Journal*, (Naylor) 2 (4).
- Elliot, Andrew J. 2015. *Frontiers in Psychology* 6: 1-8.
- Espelt, Nuria Gali, and Antonio Donaire Benito. 2004. "The Social Construction of The Image of Girona: A Methodological Approach." *Tourism Management* (Elsevier) 26 (5).
- Frank Lloyd Wright Foundation. 2017. *The Whirling Arrow*. Accessed September 30, 2021. <https://franklloydwright.org/about-us/>.
- Friedman, Alice T. 2007. *Women and the Making of the Modern House: A Social and Architectural History*. New Haven: Yale University Press.
- Garfield , Simon. 2018. *Mauve: How One Man Invented a Colour that Changed the World*. Edin burgh: Canongate Books Ltd.
- Gasparini, Katia. 2021. "The Colour of Emerging Textile for Urban Regeneration: The Role of Technology Between Experimentations and Craftsmanship." *Color Research & Application* (John Wiley & Sons) 538-545.

- Jackson, Holbrook. 1930. "Colour Determination in The Fashion Trades." *Journal of the Royal Society of Arts* (RSA The Royal Society for Arts, Manufactures and Commerce) 78 (4034): 492-513.
- Journel, Guillemette Morel. 2015. *Le Corbusier Construire la vie Moderne*. Paris: Editions du Patrimoine.
- Ke-Run, Li, Yang Ya-Qian, and Zheng Zhi-Qiang. 2019. "Research on Color Harmony of Building Façades." *Color Research & Application* (John Wiley and Sons) 45 (1): 105-119.
- Klein, Dan. 2021. *What is Art Deco? From the Archives*. Accessed August 31, 2021. <https://www.artdeco.org/archives>.
- Knowles, Eric. 2014. *Art Deco*. U.K.: Shire Publications.
- Koolhaas, Jeroen. 2007. *Boy With Kite*. August 31. Accessed 2021. <https://jeroenkoolhaas.com/2007-BOY-WITH-KITE>.
- Lambourne, R. 1999. "Paint Composition and Applications — A General Introduction." In *Paint and Surface Coatings - Theory and Practice*, edited by R. Lambourne and T. A. Striven, 1-18. Cambridge: Woodhead Publishing Ltd.
- Lee, Yeun Sook. 2014. "A Local Asset Based Regeneration Process of Gamcheon Culture Village Busan." *Korea Institute of Ecological Architecture and Environment Journal* 14 (3): 111-120.
- Les Couleurs. 2021. *Les Couleurs*. Accessed August 31, 2021. <https://www.lescouleurs.ch/en/the-colours/colour-keyboards/colour-keyboard-1931>.
- McCabe, Ina Baghdiantz. 2008. *Orientalism in Early Modern France: Eurasian Trade, Exoticism, and the Absent Regime*. Oxford: Berg.
- McCabe, Ina Badiantz. 2015. *A History of Global Consumption: 1500 - 1800*. London: Routledge.
- Miami Design Preservation League. 2021. *From the Archive – The Color of Leonard Horowitz's Life*. Accessed August 31, 2021. <https://mdpl.org/archives/2021/07/the-colors-of-leonard-horowitzs-life/>.
- Moir, Diane E. 2011. "Trademark Protection of Color Alone: How and When Does a Color Develop Secondary Meaning and Why Color Marks Can Never Be Inherently Distinctive." *Touro Law Review* (Touro Law Center) 27 (2).
- Newberry, P. E. 1939. "Howard Carter." *The Journal of Egyptian Archaeology* (Egypt Exploration Society) 25 (1): 67-69.
- Newton, Isaac. 1730. *Opticks: Or a Treatise of the Reflections, Refractions, Inflections & Colours of Light*. London: William Innys.
- Nuttall, Zelia. 1886. "The Terracotta Heads of Teotihuacan." *The American Journal of Archaeology and of the History of the Fine Arts*. (The American Journal of Archaeology and of the History of the Fine Arts) 2: 157-178.
- Old House Magazine. 2002. *Old House Magazine*. Vol. 30 (5). Active Interest Media, Inc.
- Orna, Mary Virginia. 2013. "Introduction: Colors, Natural and Synthetic, in the Ancient World." In *Springer Briefs in Molecular Science: History of Chemistry*, edited by Virginia Mary Orna, 1-10. New York: Springer.
- Pastoureaux, Michel. 2020. *The Colours of Our Memories*. Translated by Janet Lloyd. London: Polity Press.
- Pastoureaux, Michel. 2017. *Red The History of a Color*. Princeton: Princeton University Press.
- Pavela Painting. 2018. *Pavela Painting*. Accessed August 31, 2021. <https://favelapainting.com/PROJECTS>.
- Plato. 1892. *Republic. Timaeus. Critias - The Dialogues of Plato*. Translated by B. Jowett. Vol. II. New York: Charles Scribner's Sons.
- Pool, Rachel Frances. 2018. "The Misconceived Image in Society of American Art Deco Architecture and Design." *The International Journal of the Image* (Common Ground Research Networks) 9 (2): 37-53.
- Prisco, Joanna. 2013. *Expansive Mural Makeover*. November 2. Accessed August 31, 2021. <https://abcnews.go.com/Lifestyle/artists-aim-rebrand-rio-slums-expansive-mural-makeover/story?id=20740743>.
- Sherwin Williams. n.d. *Heritage Colors, Authentic Exterior Colors for American Buildings 1820/1920*. Cleveland: The Sherwin Williams Company.
- Sulistyaningsih, Tri, Jainuri Jainuri, Salahudin Salahudin, Hazel Dapat Jovita, and Achmad Nurmandi. 2021. "Can Combined Marketing and Planning-oriented of Community-based Social Marketing (CBSM) Project Successfully Transform the Slum Area to Tourism Village? A Case Study of the Jodipan Colorful Urban Village, Malang, Indonesia." *Journal of Nonprofit & Public Sector Marketing* (Routledge, Taylor & Francis Group).
- Treisman, Michel. 1996. "Why Goethe Rejected Newton's Theory of Light." *Perception* (Sage Publications) 25: 1219-1222.
- Von Castell, Christoph, Heiko Hecht, and Daniel Oberfeld. 2018. "Bright Paint Makes Interior-Space Surfaces Appear Farther Away." *plos One* (Public Library of Science) 13 (9): 1-15.
- Von Goethe, Johann Wolfgang. 1970. Cambridge: MIT Press.
- Wikipedia. 2021. *Taliesin West*. June 26. Accessed August 31, 2021. https://en.wikipedia.org/wiki/Taliesin_West.
- Wulandari, Prisca Kiki. 2017. "Inovasi Pemuda Dalam Mendukung Ketahanan Ekonomi Keluarga (Studi Di Kampung Warna-Warni Kelurahan Jodipan, Kecamatan Blimbing, Kota Malang)." *Jurnal Ketahanan Nasional* 23 (3): 300-319.